

As a global enterprise, HSG sticks to providing professional and convenient service support to customers at home and board

- Professional Training**
Multiple technical training services and free operation training are provided for customers and dealers in a timely manner.
- Efficient Support**
Humanistic service model, online services and 7*24 hotline to offer solutions and assistance.
- Optimized Transport**
Multi-channel transport solutions and a professional transport solution team providing various transport cases to satisfy the demand of customers and save transportation fees.
- Sufficient Accessories**
Highly efficient accessory delivery service; multiple network inventories jointly respond to accessory demand, shortening customers' waiting times and accelerating production.
- Careful Services**
Domestic door-to-door service and free proofing, with over 100+ dealers providing efficient and convenient services.

Headquarters Add.: No. 4, Anye Road, Shunde District, Foshan, Guangdong, China
Website: www.hsglaser.com
Email: info@hsglaser.com
Tel: +86 757-66833906

HSG
Shape Metal, Shape Trust



Website

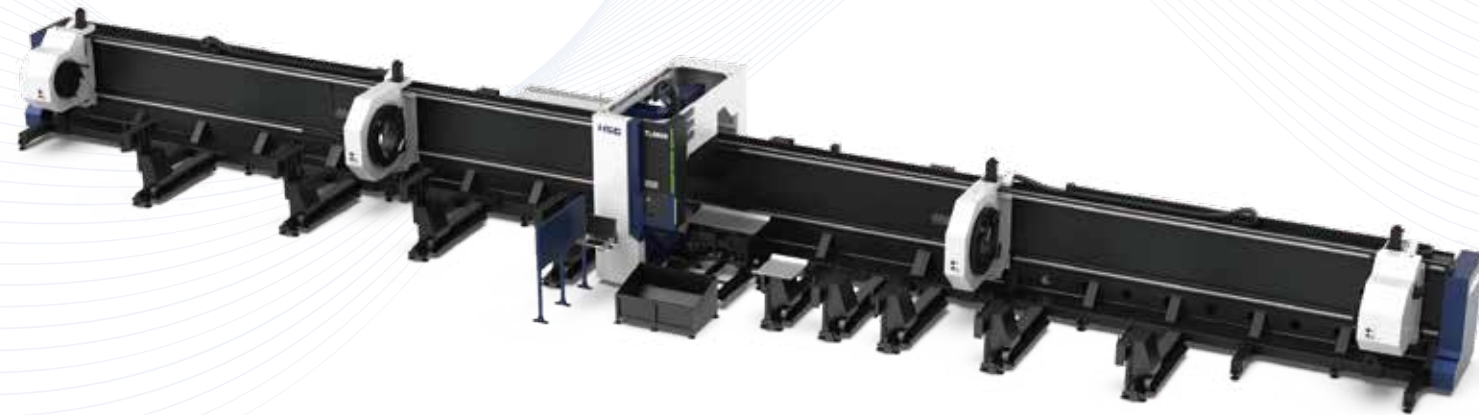


Facebook



Youtube

HSG



TL

Four-chuck Heavy-duty Tube Laser Cutting Machine

www.hsglaser.com

Version No.: 2024.08

Company Culture

- SLOGAN**
Shape Metal, Shape Trust
- MISSION**
To support the high-speed growth of our customers
- VISION**
To be a world-leading provider of metal shaping equipments & comprehensive solutions

Company Profile



19
Global Branches



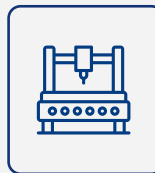
100+
Countries Covered



5
Manufacturing Bases



30+
Global Service Centers



8,000+
Annual Capability

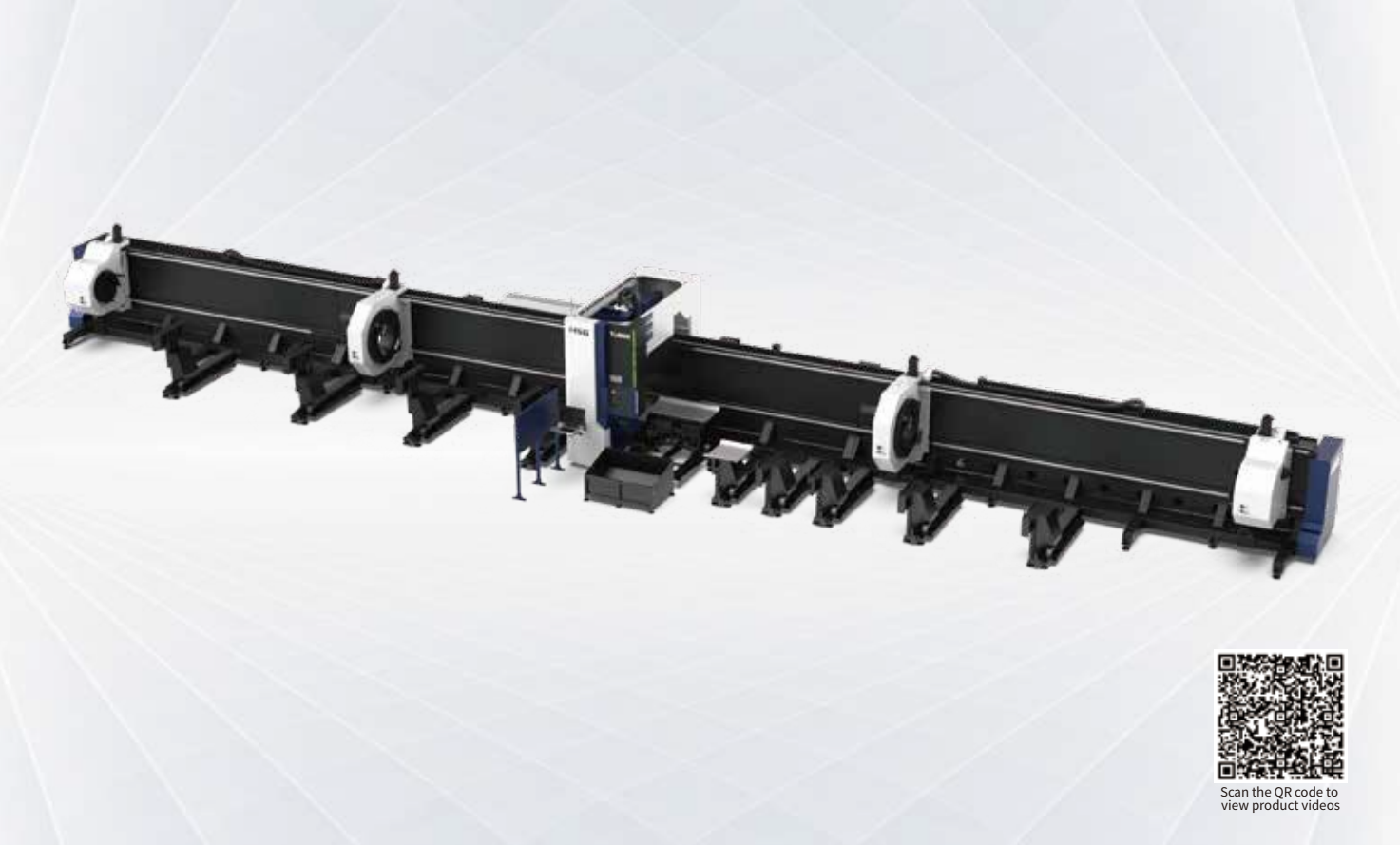


135,000m²
Occupied Area



TL6000-20000W

Four-chuck Heavy-duty Tube Laser Cutting Machine



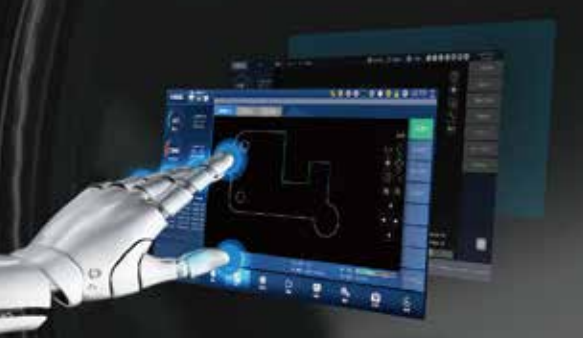
Technical Parameters

Technical Parameter	TL660-12
Power	6000-20000W
Rotating Speed of Chucks	30r/min
Max. Linkage Speed	50m/min
Max. Linkage Acceleration	0.2G
X/Y-axis Positioning Accuracy	±0.1mm/m
X/Y-axis Repositioning Accuracy	±0.1mm
*Tailing Length	0
Cutting Capacity	Round tube Φ80 - Φ660mm Square tube □80*80 - □450*450mm Diagonal≤660mm and Side Length ≥80mm
Weight of Single Tube	3000kg
Dimensions with Semi-Auto (L*W*H)	29000*6000*4000mm
The range of pipe material	3000-12000mm

*Only when the nesting material is reasonable can it be achieved
* Machine appearance, technical parameters, function description, data comparison shown in this page are from HSG in-house laboratory.
All testing results and experimental data shall be subject to real machine.

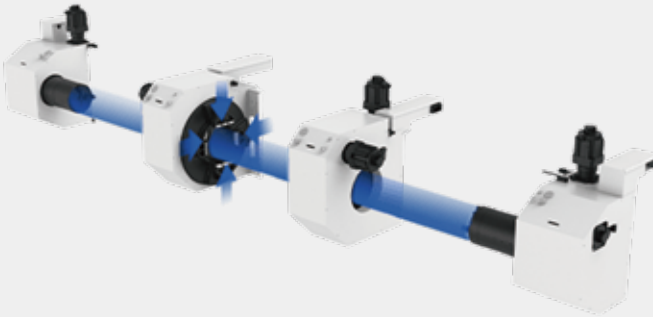
X9800 Bus-based Tube Cutting Control System

- Simple Interface
Clear interface is convenient for users operating and shows cutting data in real time to save time and costs.
- Functional Integration Control
A number of core functions are showed centrally on the interface to reduce operating steps and users can easily learn to operate.



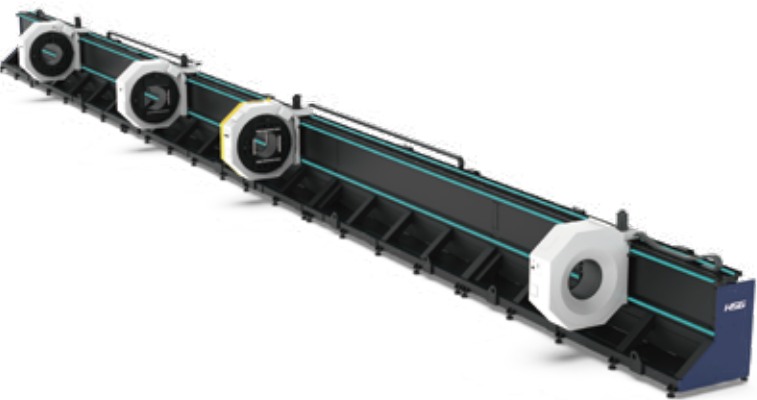
Four Chucks Structure

- HSG launches the first generation of four-chucks heavy-duty tube laser cutting machine in 2019, laying a groundwork for cutting heavy, large and long tube stably.
- Heavy-duty pneumatic chucks for stable clamping .
- Maximum clamping diameter: 500mm (Round Tube).
- Single tube bearing: 1200Kg.



4+1 Full-track Portable Chuck Structure

- Weight Capacity: 4000KG
- Clamping Range



(Model:TL730S)

Cut with Short Tailings

- Four chucks combine ordinate cutting with various clamping types to achieve short tailing and improve material utilization ratio.
- Notes: When work procedures are well arranged, zero tailing comes true.



Power-off Cutting Restart TechnologyDatabase

- Foreign-imported servo motor contains an absolute encoder to offer power-off cutting restart function, namely, users only need to click to restart the cutting and power failure will not be worried.



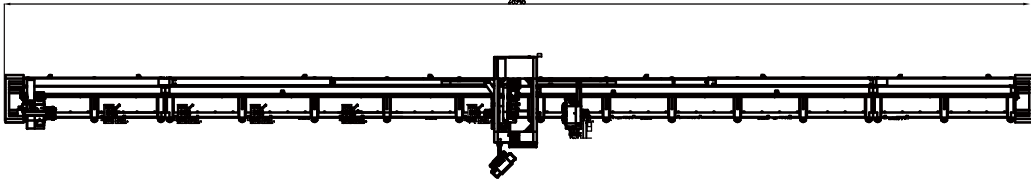
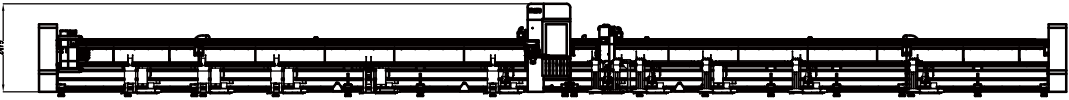
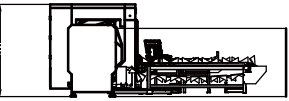
Various Tube Processing Functions

- Space leapfrog and fly cutting, in favor of the decrease of idle running of cutting head and the increase of cutting efficiency.
- Restart to cut from break-point, with less material waste.
- Four-side centering for high cutting precision.
- Smart typesetting algorithm to enhance material utilization.

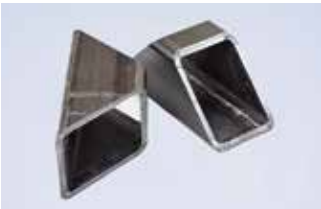


Machine Foundation

The marked size has about 10mm error
*Pictures of TL660 are for reference only and subject to actual dimensions.
*The dimensions of the standard configuration of the machine are for reference only.
Please refer to the three views of the order configuration for the actual machine dimensions.



Cutting Samples



Cutting Capacity

Model	40mm	160mm	240mm	320mm	400mm	480mm	560mm	640mm	720mm	800mm	880mm	960mm	1040mm	Diameter
TL660														

The actual machines shall prevail and above data & pictures are only for reference.



As a global enterprise, HSG sticks to providing professional and convenient service support to customers at home and board



Professional Training

Multiple technical training services and free operation training are provided for customers and dealers in a timely manner.



Efficient Support

Humanistic service model, online services and 7*24 hotline to offer solutions and assistance.



Optimized Transport

Multi-channel transport solutions and a professional transport solution team providing various transport cases to satisfy the demand of customers and save transportation fees.



Sufficient Accessories

Highly efficient accessory delivery service; multiple network inventories jointly respond to accessory demand, shortening customers' waiting times and accelerating production.



Careful Services

Domestic door-to-door service and free proofing, with over 100+ dealers providing efficient and convenient services.



Shape Metal, Shape Trust



Website



Facebook



Youtube

Headquarters Add.: No. 4, Anye Road, Shunde District, Foshan, Guangdong, China
Website: www.hsglaser.com
Email: info@hsglaser.com
Tel: +86 757-66833906



TL730S

Flagship '4+1' Full-track Heavy Duty Tube Beveling Fiber Laser Cutting Machine

www.hsglaser.com

Company Culture



SLOGAN

Shape Metal, Shape Trust



MISSION

To support the high-speed growth of our customers



VISION

To be a world-leading provider of metal shaping equipments & comprehensive solutions

Company Profile



19

Global Branches



100+

Countries Covered



5

Manufacturing Bases



8,000+

Annual Capability



30+

Global Service Centers



135,000m²

Occupied Area



TL730S

6000-20000W

Flagship ‘4+1’ Full-track Heavy Duty Tube Beveling Fiber Laser Cutting Machine



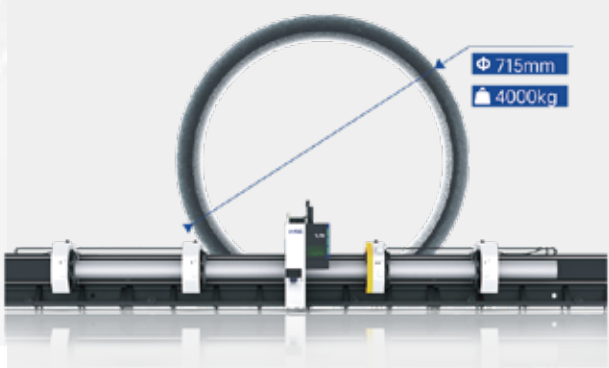
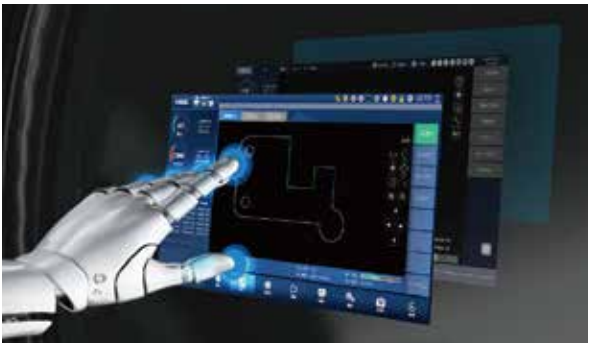
Technical Parameters

Technical Parameter	TL730S
Power	6000-20000W
Rotating Speed of Chucks	45m/min
X/Y-axis Positioning Accuracy	±0.1mm/m
X/Y-axis Repositioning Accuracy	±0.1mm
*Tailing Length	0
Cutting Capacity	Round tube Φ120 - Φ715 mm Square tube □120-500 mm Rectangular tube ≤715 mm and Side length ≤120-500 mm
Weight of Single Tube	4000kg
Dimensions with Semi-Auto (L*W*H)	38000*6500*5000mm

*Only when the nesting material is reasonable can it be achieved.
* Machine appearance, technical parameters, function description, data comparison shown in this page are from HSG in-house laboratory.
All testing results and experimental data shall be subject to real machine.

HSG-X Bus Control System

- Simple Interface
Clear interface is convenient for users operating and shows cutting data in real time to save time and costs.
- Functional Integration Control
A number of core functions are showed centrally on the interface to reduce operating steps and users can easily learn to operate.

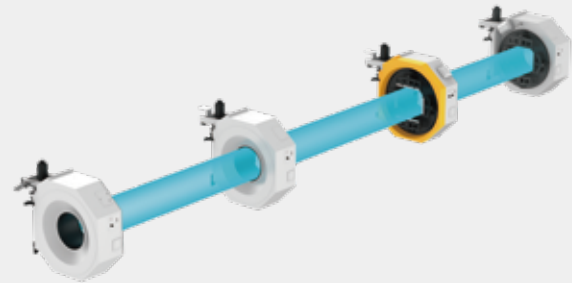


Max Heavy-duty Tube Processing Ability The machine can process tube diameters in 715mm.

- The machine can process tube diameters in 715mm.
- Tube Length: 16m
- Weight per Tube: 4000kg

Innovate 4+1 Chucks Structure

- C3 chuck and C4 chuck are combined to achieve double support.
- There are 4 points clamping at loading section and the load bearing improved significantly.
- Clamping near the cutting area at 2 points which the accuracy is effectively guaranteed.

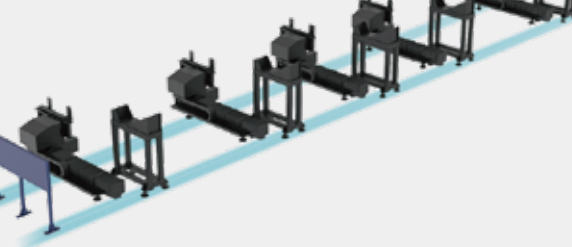


Intelligent digital chuck

- The chuck and the control system can communicate with each other to achieve full closed-loop control.
- *The machine has functions in jaw state detection, tube size measurement and adaptive adjustment of clamping force.

Beveling Processing

- Beveling tube cutting head to achieve 0-45°beveling cutting.

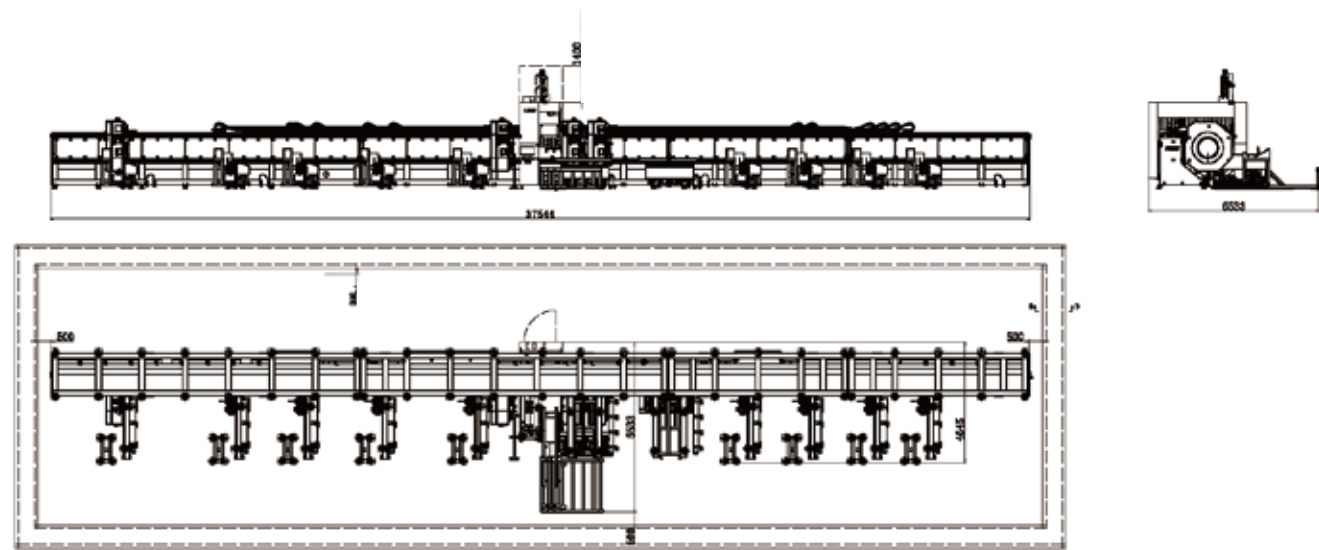


Standard automatic loading and unloading mechanism for heavy tubes

- Realize automatic loading and unloading of heavy tubes, saving labor and reducing the risk of accidents that may occur with manual loading.
- Materials are loaded simultaneously while unloading, eliminating waiting time and improving production efficiency.

Machine Foundation

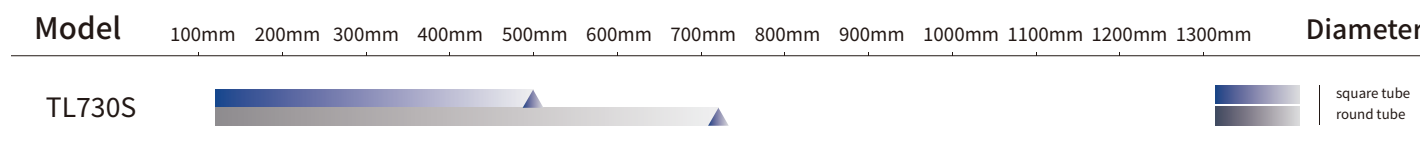
*The marked size has about 10mm error



Cutting Samples



Cutting Capacity



The actual machines shall prevail and above data & pictures are only for reference.