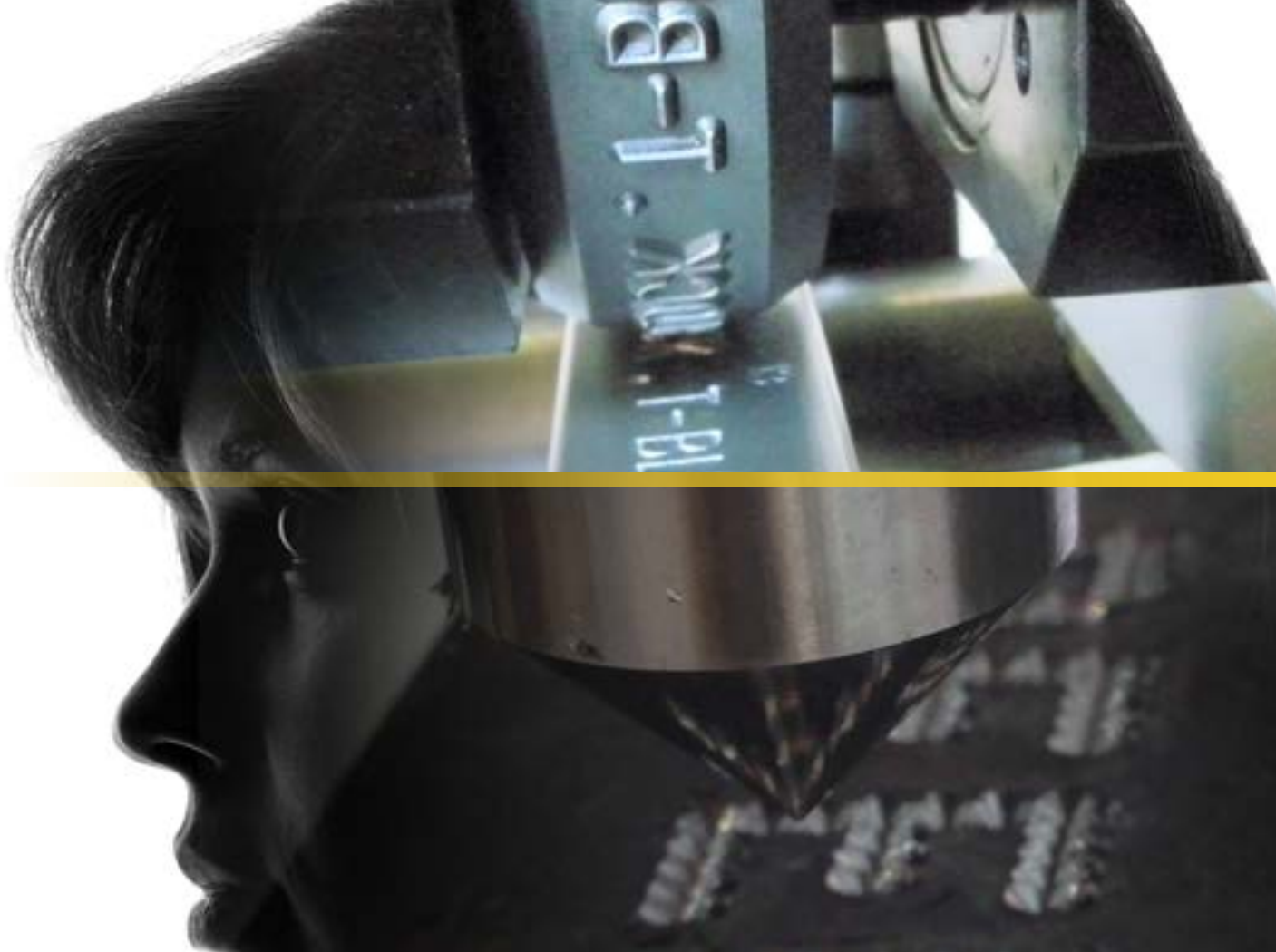




Your Global Marking Partner since 1940



# GENERAL CATALOGUE

Machines and systems  
for industrial marking

[www.automator.com](http://www.automator.com)



# WHY CHOOSE AUTOMATOR?



Since its founding in 1940, AUTOMATOR has been focused exclusively on Industrial Marking Products and Solutions making us the largest manufacturer of marking equipment in the world.

No matter how you want to permanently identify your product, AUTOMATOR has a solution that will exceed your expectation making a mark that will enhance your part and limit your liabilities.

Our GLOBAL network of partners (not just distributors!) are available in 102 countries serving 100+ business sectors. No matter where you are in this world, we are there to support you and our marking products, birth to death.

**We are your global  
marking partner since  
1940!**



Laser



Dot peen



Roll stamping



Impact



Presses



Scribe



Hot foil



Chem-etch

Automator is certified CISQ,  
the consortium for IT Software Quality



Automator Group believes in rational energy use as input  
in the design and development of its marking systems



Automator is certified ISO 9001 IQ Net since 2003



Automator Group believes that all its machinery must be  
designed and produced according to the concept  
of "green philosophy"



# LASER

## **nanoVIS<sup>II</sup>**

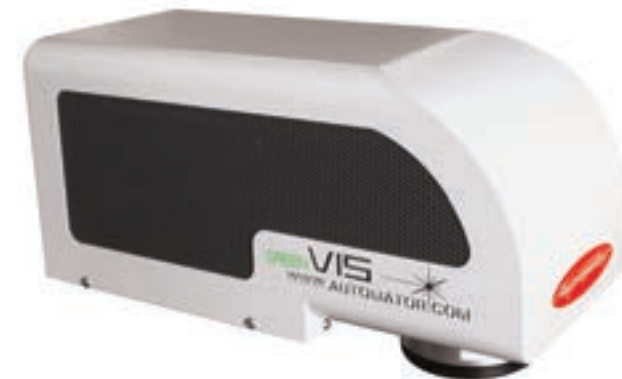
- aWave™ laser marking products
- Get results comparable to much more expensive units
- A wide variety of materials, such as Plastics, Metals, Anodized, Ceramics and much more
- Easy preliminary diagnosis LED system.

## **VIS - Power range 10 - 20 - 30 - 40 W**

- The most versatile, easy to use and plug-and-play
- In Mark-alone™ mode, no pc is needed
- A COMPLETE SOLUTION IN A SINGLE box, NO SEPARATE CONTROLLER!

## **greenVIS - Power range 3 - 5 - 10 W**

Ask us how to SAVE US\$6300 with the VIS!



# LASER



## **FYBRA™**

- In the MarkAlone™ mode, no pc is needed
- Always the right focus with our Automatic FocusFinder™
- Get deeper marking in a variety of environments
- Power range 22 - 33 - 54W



## **FocusFinder™**

Automatically set focal height  
between lens and your part

# LASER

## Make any Automator laser a Class I marking STATION

Automator enclosures are elegant in form and function:

Available for all Automator lasers

- Automated door and electric Z axis
- Large inspection window, large marking area, small footprint
- T-Slot base for easily mounting fixtures

Options: Rotary Axis, Programmable Z Axis and Automatic FocusFinder™  
A wide range of loading area sizes



REGINA



loading area  
15,7x15,7"



ARENA



loading area  
21,6x17,3"



REX II



loading area  
39,37x35,43"

# LASER



**SUPERIOR**



loading area  
31,5x31,5"



**Laser  
Snorkel™**



The smallest portable  
laser in the world

...and also customised models!

# AC500

## New universal and full optional

A 7" touch screen user interface makes the extensive features of the software easy to access. For the first time, marking technology has reached the ultimate in capabilities and intuitive simplicity.



The AC500 controller can be used with a PC or alone with the special Automator MarkAlone™. Up to 8 programs management.

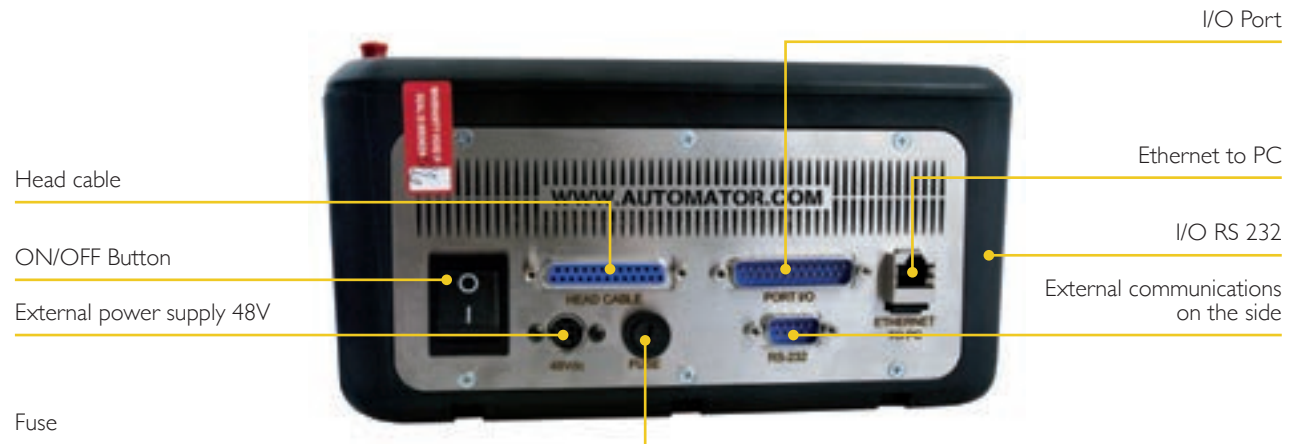


## External optional communications



(\*) All listed brands are registered and property of their company

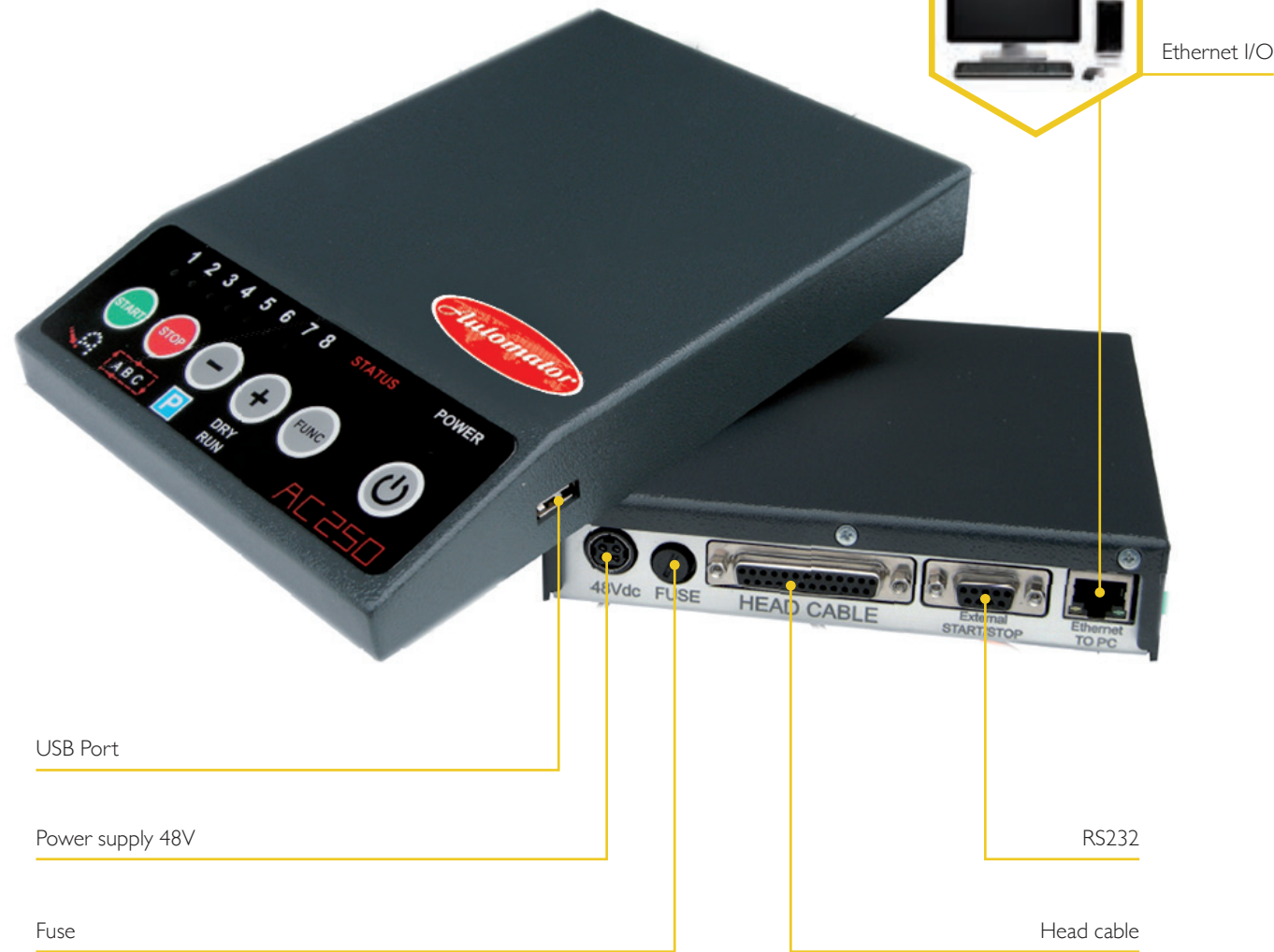
For all models







For all models



USB Port

Power supply 48V

Fuse

Head cable

RS232

Ethernet I/O

# AC250

## Universal and affordable

The AC250 controller can operate as a slave to a local PC or you can download up to eight patterns to the controller's on-board memory and processor to operate without a PC in our proprietary MarkAlone™ method.

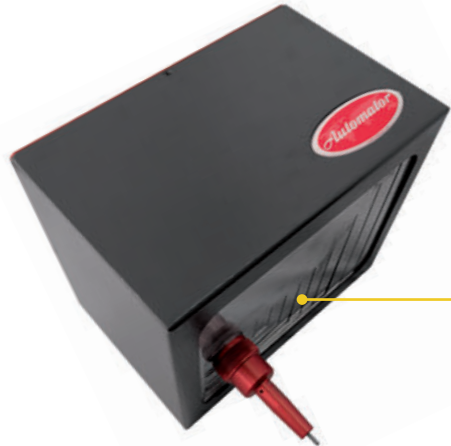
IEC 60950-1

CSA C22.2 60950-1



The AC500 controller can be used with a PC or alone with the special Automator MarkAlone™ Up to 8 programs management.

# DOT PEEN



Watch video now!



**ADP120160**  
**ADP120160DEEP**

120 x 160 mm - 4.7 x 6.2 in



**ADP5090**

50 x 90 mm - 1.9 x 3.5 in



**ADP300400**

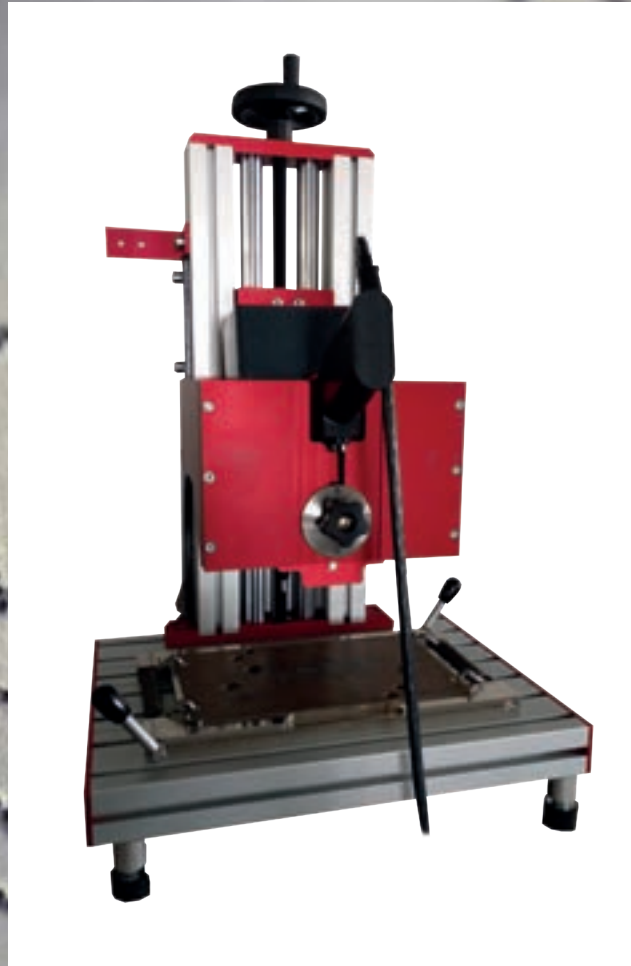


**ADP5090P**  
**ADP120160P**  
**ADP300400P**

Marking flexibility: logos, drawings, serial numbers, text, arc text, marking preview and much more then that.



# DOT PEEN



ADP Convertible Kit Use Automator dot peen marker easily in both toolstand and portable mode

# SCRIBE



Watch video now!



**ASM6090**

60 x 90 mm - 0.9 x 3.5 in



**ASM40150**

40 x 150 mm - 1.5 x 5.9 in

New small, compact and silent scribe machine The best balance quality/price!

# DOT PEEN Pins



3 - 6 mm dot



12 mm dot



18 mm dot



3 - 6 mm XL dot



4 mm vibro



3 mm vibro



16 mm scribe



3 mm electric



# ROLL STAMPING



## MB71 UE

Electric unit for integration.



## MB41

A wide choice of models to mark on the circumferences, without crash, logos, signs and numbers.



## MB71 E

Manual, electric and electro-pneumatic versions for marking medium diameters up to 110 mm.





# ROLL STAMPING



## MB76 EP 90°

Continuous marking on Hexagonal Bars. A wide choice of models to mark on circumferences with 100 % uptime, ease of use for marking logos or numbers



## MB71 CE



## MB76 EP

Marking diameters up to 600 mm. Models available in electric and electric-pneumatic versions.

...the best solution for round!

# IMPACT



Pneumatic impact units with power up to 7500 Kg, ideal for integration.



Pneumatic impact bench marking machines, with power up to 7500 Kg.



Manual impact marking bench machines, with power up to 6500 Kg.







# PRESSES



Manual

Manual and pneumatic presses for pressing, rivetting, bending or stacking.

Pneumatic



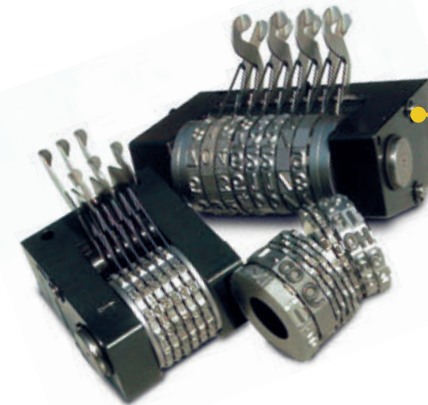
Easy marking in ONE MOTION !

# ACCESSORIES



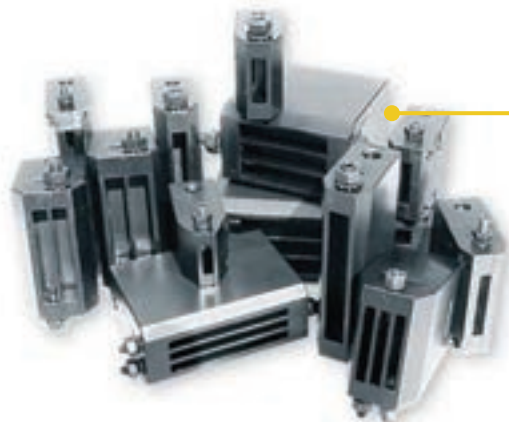
## MB5

Numbering head  
for manual applications.



## MBI4

Special  
dies and logos.



## PC

Typeholders with 1, 2, 3 lines  
for Automator types.  
Manual and automatic  
numbering heads in different  
heights wheels number.



High quality steel types,  
in different heights,  
available as single units  
or in boxes.



# TRACEABILITY

MARK,  
READ,  
TRACK.



QR code



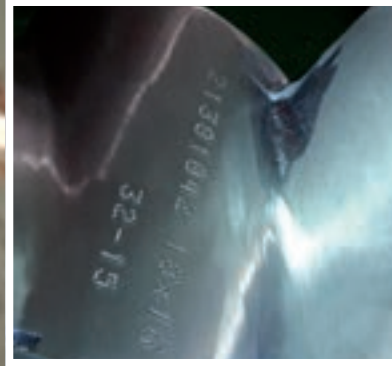
Data matrix

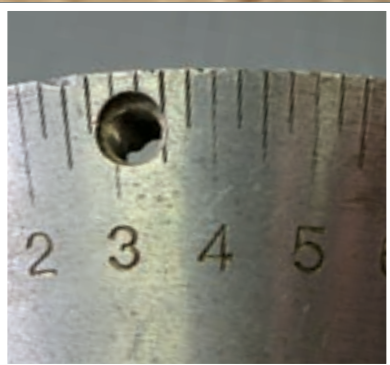
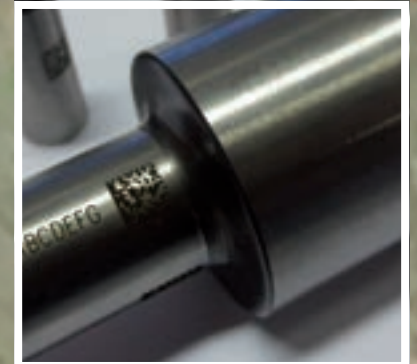
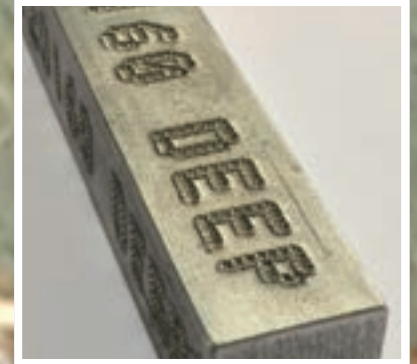


Barcode









THE BIGGEST MARKING **FAMILY** IN THE WORLD.



AUTOMATOR AMERICA INC - 475 Douglas Ave., Ste. B, Chillicothe, Ohio 45601. USA [info.am@automator.com](mailto:info.am@automator.com) - Ph +1 (740) 983 0157

AUTOMATOR CANADA INC - 2170 Lakeshore Rd. Burlington Ontario, L7R 1A6 CANADA [info.ca@automator.com](mailto:info.ca@automator.com) - Ph: +1 (905) 407 8770

[www.automator.com](http://www.automator.com)

