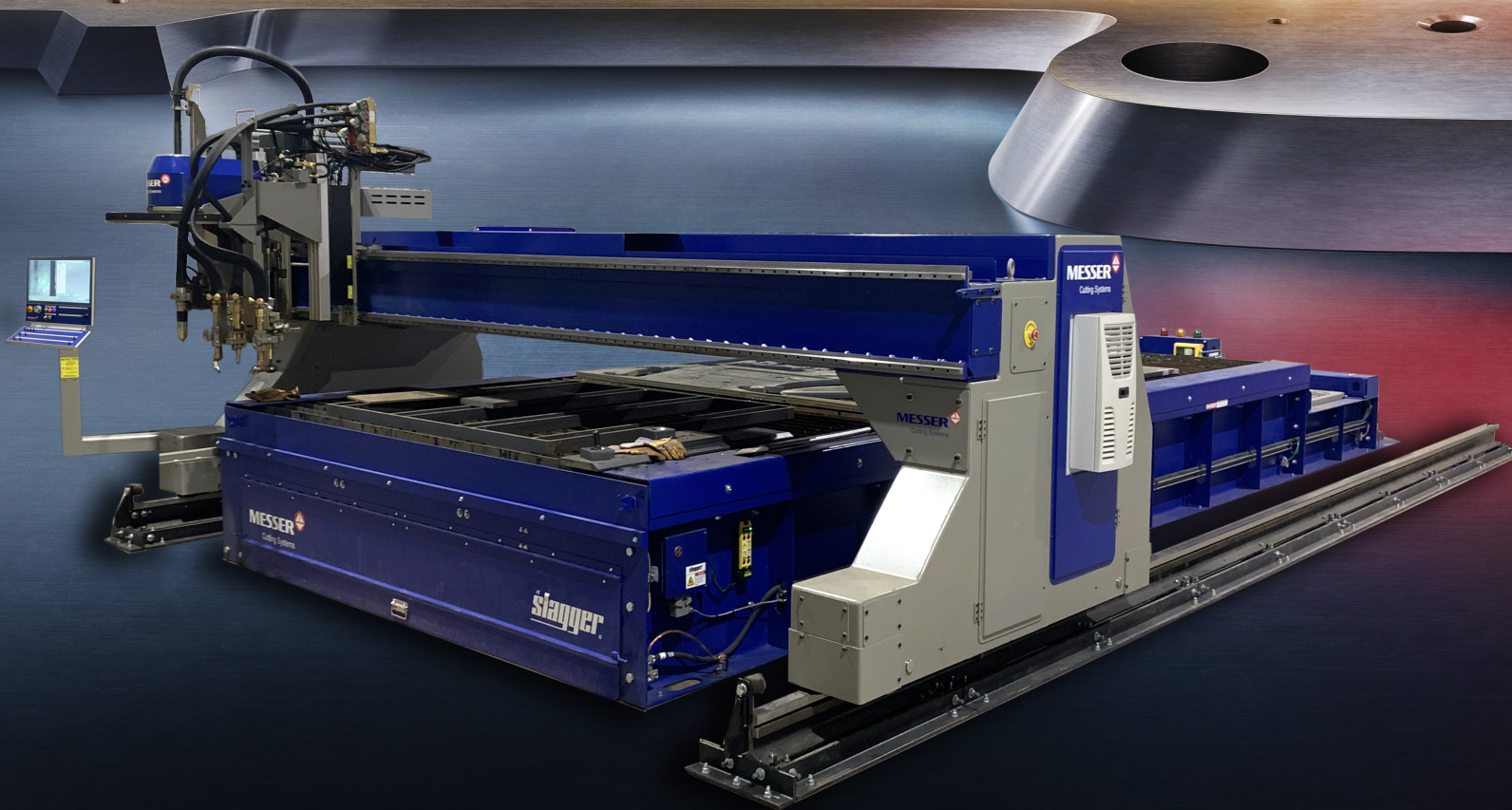


TITAN III

5-AXIS HIGH DEFINITION MASTERPIECE



TITAN III

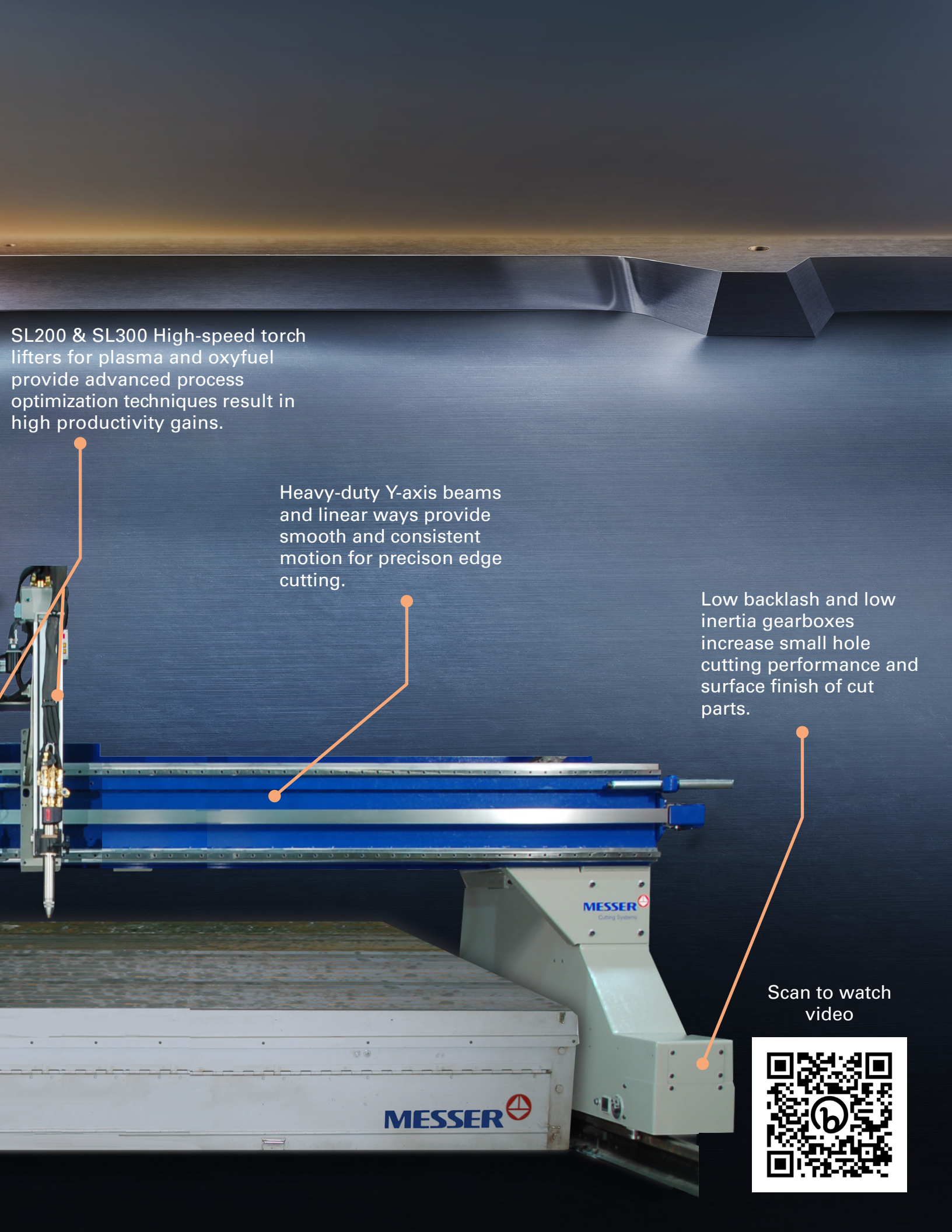
INCREDIBLE STRENGTH, FLEXIBILITY, AND PERFORMANCE.

Designed for bevel cutting with plasma and oxyfuel, the Titan III can be equipped with drilling up to 1/2", various marking styles, and can be configured with high definition precision plasma or oxyfuel torches. The Titan III combines Y-axis linear ways with SureTrack pitch line rack and pinion drive to provide smooth cut edges and precise holes. Wider end trucks with maximum guide roller spread stabilizes the X-axis motion for precise cut edge performance.

The Titan III has incredible strength, flexibility, and performance. That's powerful productivity!

Designed to improve operator efficiency, eliminate redundancy, and provide remote transparency of important production data.





SL200 & SL300 High-speed torch lifters for plasma and oxyfuel provide advanced process optimization techniques result in high productivity gains.

Heavy-duty Y-axis beams and linear ways provide smooth and consistent motion for precision edge cutting.

Low backlash and low inertia gearboxes increase small hole cutting performance and surface finish of cut parts.

Scan to watch video



MESSER 



**CUTTING-EDGE
SOLUTIONS**



STANDARD FEATURES

GLOBAL CONTROL^{Plus}

Messer introduces the 24" Global Control Plus, a blend of top-tier tech, reliability, and simplicity. Built on global CNC expertise, it boasts a rich shape library, CAD import, and true-shape nesting.

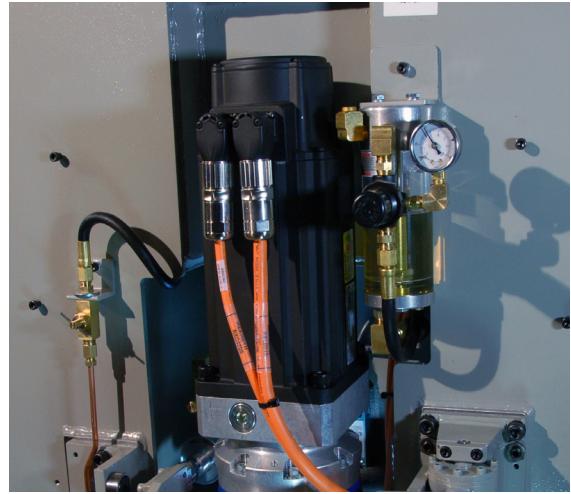
Encased in an exclusive IP65 enclosure, mastery is minutes away for new users.

Key highlights: touch screen control, efficient CNC computer, Ethernet-based real-time updates, minimized downtime via Virtual Service™, swift on-floor cutting, and a vast shape selection.

Operator tools include an 8-way joystick and protective backup features. Optional: real-time production insights and alignment cameras.

GLOBAL CONTROL^{PLUS} BENEFITS

- + **User-Friendly:** Mastery for new users in minutes.
- + **Key Highlights:** Touch screen control, efficient CNC computer.
- + **Real-Time Updates:** Ethernet-based real-time updates.
- + **Tech Excellence:** Blend of top-tier technology, reliability, and simplicity.
- + **Shape Library:** Includes a dynamic shape library and CAD import features.



STANDARD FEATURES

BRUSHLESS DIGITAL DRIVES

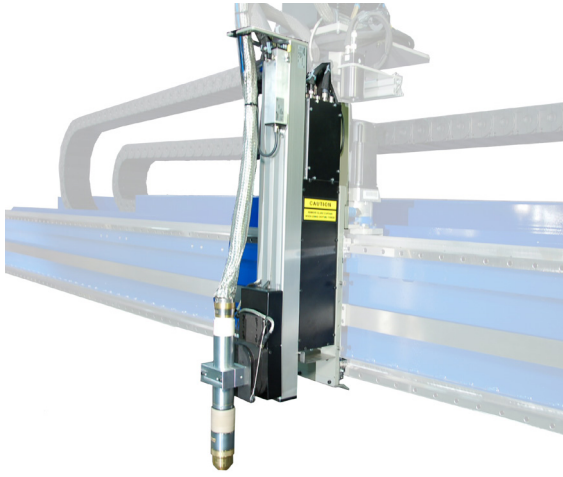
Brushless Digital Drives boasts a powerful and precise 21 HP drive for the X and Y-Axis, ensuring smooth, accurate motion.

This high-performance setup is key to achieving superior cut quality and accuracy. The zero-maintenance, high-compliance nature of these drives guarantees the smoothest cut edges, enhancing overall productivity.

Notably, the brushless design means there are no brushes to change, keeping the cutting process uninterrupted and efficient.

BRUSHLESS DIGITAL DRIVE BENEFITS

- + **Powerful Dual-Axis Drive:** 21 HP for X and Y-Axis.
- + **Smooth, Accurate Motion:** Ensures exceptional cut quality.
- + **Zero Maintenance Drives:** High compliance for smooth edges.
- + **Brushless Design:** No need for brush changes.
- + **Continuous Operation:** Uninterrupted cutting performance.



PROCESS OPTIONS

SL200 & SL300 PLASMA TORCH LIFTER

The SL200 and SL300 plasma and oxyfuel SmartLifters, enhanced with Messer Optimized System Technology, are designed to significantly boost productivity by producing more parts in less time.

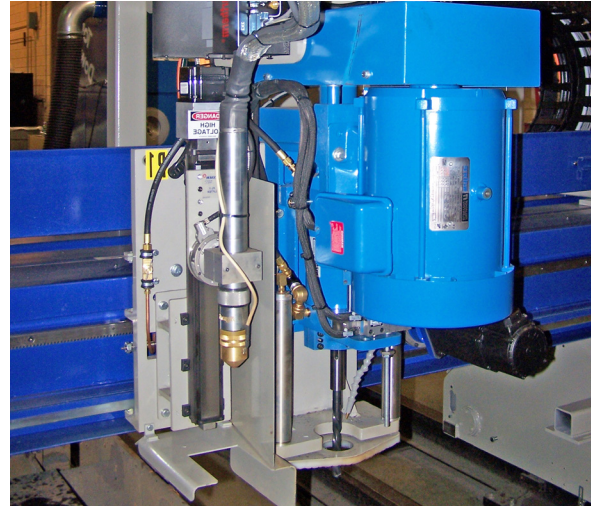
These lifters feature an adaptive height sense system that quickly learns the plate's height, enabling rapid and accurate torch positioning.

Applicable not just to plasma torches but also to oxyfuel torches and markers, this technology efficiently reduces cycle times by up to 30%.

Additionally, Messer's arc voltage sampling system for accurate parts, process optimization to minimize torch downtime, and automatic consumable wear detection to reduce operating costs.

BRUSHLESS DIGITAL DRIVE BENEFITS

- + **Adaptive IHS System:** Rapidly adjusts to plate height.
- + **Cycle Time Reduction:** Up to 30% faster.
- + **Quality Production:** Less need for secondary operations.
- + **Arc Voltage Sampling:** Ensures accuracy and repeatability.
- + **Automatic Wear Detection:** Lowers costs, enhances productivity.



DRILLING OPTION

ELECTRIC DRILL UNIT

The Electric Drill Unit, designed for integration with plasma and oxyfuel cutting systems, allows for efficient form work on a single piece in one handling. This feature ensures precise feature-to-feature alignment in each setup, enhancing overall accuracy.

Equipped with a mist lubrication system for seamless drilling, it offers a feed-rate controlled segment of a four-inch drill stroke to minimize tool breakage.

Automated drill start and stop commands further streamline the process, freeing operators for other tasks. The unit's drilling capacity varies by model, handling up to 3/8" diameter on the MetalMaster Evolution and up to 1/2" on the MetalMaster Xcel and Titan III.

ELECTRIC DRILL BENEFITS

- + **Integrated Cutting and Drilling:** Enhances operational efficiency.
- + **Precise Alignment:** Ensures feature-to-feature accuracy.
- + **Mist Lubrication System:** For reliable drilling.
- + **Automated Drill Commands:** Optimizes operator efficiency.
- + **Model-Specific Drilling Capacity:** Up to 1/2-inch diameter.



BEVEL OPTIONS

GLOBAL ROTATOR DELTA^E

The Global Rotator Delta-e, recognized for its robust and compact design, is paired with OmniBevel software to produce the highest quality cut parts in the market.

Its unique compound skew design elevates critical components away from the cutting torch, minimizing damage risks from slag, heat, and collision.

This system is adept at cutting precise bevel profiles over a wide range of angles, controlled by the Global Control Plus.

It boasts a rapid rotation capability and precise torch height control, ensuring accuracy and efficiency in every cut.

DELTA^E ROTATOR BENEFITS

- + **Advanced Design:** Robust, compact, and damage-resistant.
- + **Wide Angle Range:** Cuts from +45° to -45°.
- + **Precise Torch Control:** Automated with analog arc voltage.
- + **Efficient Rotation:** Up to 50 RPM, +/- 460°.
- + **Optimized for Various Machines:** Compatible with select cutting systems.



PROCESS OPTIONS

ALFA TORCH

The ALFA Oxyfuel torch, expertly developed by Messer Cutting Systems, elevates the standard in oxyfuel cutting with its innovative and efficient design.

It features advanced internal height sensing and auto-ignition, significantly streamlining the cutting process.

The torch's design facilitates tool-free nozzle changes, effectively eliminating the risk of misalignment and substantially reducing setup times.

Its cutting-edge magnetic height sensing is completely integrated within the torch, removing the need for external components and ensuring consistent performance even in challenging environments with slag, mill scale, and moisture.

ALFA TORCH BENEFITS

- + **Integrated Height Sensing:** Internal system with no external parts.
- + **Tool-Free Nozzle Changes:** Eliminates misalignment, reduces setup time.
- + **Reliable in Adverse Conditions:** Unaffected by slag, mill scale, or moisture.
- + **Optimal Material Utilization:** Effective cutting up to plate edge.
- + **Easy-to-Use Digital Display:** Shows current operating status.



PROCESS OPTIONS **OMNIFLOW**

The Messer Cutting Systems Omniflow Automatic Gas Control System revolutionizes oxyfuel cutting by automating the setting and regulation of preheat oxygen, cutting oxygen, and fuel gas pressure.

This system enables precise control of the piercing process for mild steel up to 5" thick and is designed for use with the Messer Turbo-Flame™ oxyfuel torch.

Integrated into the Global ControlS, it eliminates the need for additional control systems.

Each OmniFlow controller can handle enough gas flow for up to 16 torch-inches, allowing two controllers to efficiently manage up to 32 torch inches of cut.

OMNIFLOW BENEFITS

- + **Automated Gas Control:** Simplifies setup, enhances precision.
- + **Optimized Preheat and Pierce:** Reduces cycle time, improves quality.
- + **Increased Tip Life:** Directs slag stream away from the tip.
- + **Precise Pressure Sensors:** Effective input and output gas control.
- + **Editable Cutting Parameters:** Allows process fine-tuning by the operator.



MARKING OPTIONS **MARKING SYSTEMS**

Plate marking offers versatile solutions for creating lasting marks on a variety of metal materials, including stainless steel, mild steel, aluminum, titanium, and more.

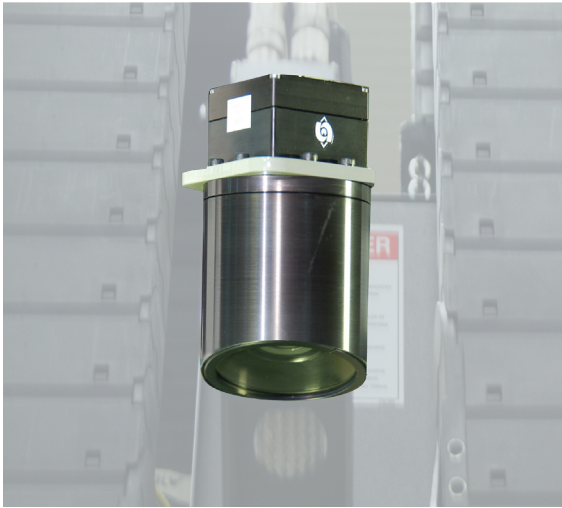
This process is essential for legibility and permanency in text marks, layout lines, and weldment marking.

Plate marking solutions, such as engravers and etchers, provide deep, durable marks that withstand harsh environments and remain visible under various coatings.

These solutions are crucial for applications that require traceability and precise identification, making them invaluable in industries like automotive, aerospace, medical, and electronics.

MARKING BENEFITS

- + **Wide Material Compatibility:** Effective on diverse metals and alloys.
- + **Durable Marking Techniques:** Engraving for deep, lasting marks.
- + **Flexible Applications:** Suitable for text, images, and serial numbers.
- + **Advanced Technology:** Utilizes CNC and laser systems.
- + **Industrial Relevance:** Essential in automotive, aerospace, and medical fields.



ADDITIONAL OPTIONS

DIGITAL VIDEO CAMERA

Messer Cutting Systems' Digital Video Camera, integral to our Optimized System Technology, revolutionizes cutting process monitoring and alignment.

It serves as a dual-purpose tool, enabling operators to precisely align the part program using a crosshair feature and providing an unobstructed, glare-free view of the cutting process when the crosshair is off.

The Digital Video Camera offers a comprehensive "bird's-eye view" for enhanced accuracy and alignment speed.

Available on all Messer machines, this technology significantly reduces setup times by up to 50% and aids in diagnostics through Virtual Service™, leading to greater efficiency and reduced scrap.

VIDEO CAMERA BENEFITS

- + **Versatile Functionality:** Alignment tool and cutting process monitor.
- + **Enhanced Precision:** Accurate manual alignment with crosshair feature.
- + **Global Control Integration:** Bird's-eye view for operators.
- + **Efficiency Improvements:** Reduces setup time by up to 50%.
- + **Diagnostic Support:** Streaming video for troubleshooting.



SPECIAL FEATURES

THE SLAGGER®

The Slagger® cutting table, exclusive to Messer Cutting Systems, stands out for its efficient slag removal capabilities.

Designed to handle slag from plasma, laser, or oxyfuel cutting, it quickly transports slag from the table bottom to a collection bucket, streamlining the cleaning process.

The Slagger® table supports material up to four inches thick, with larger sizes available upon request. This innovative table is not only patented but also manufactured by a leading metal fabrication company, ensuring quality and reliability.

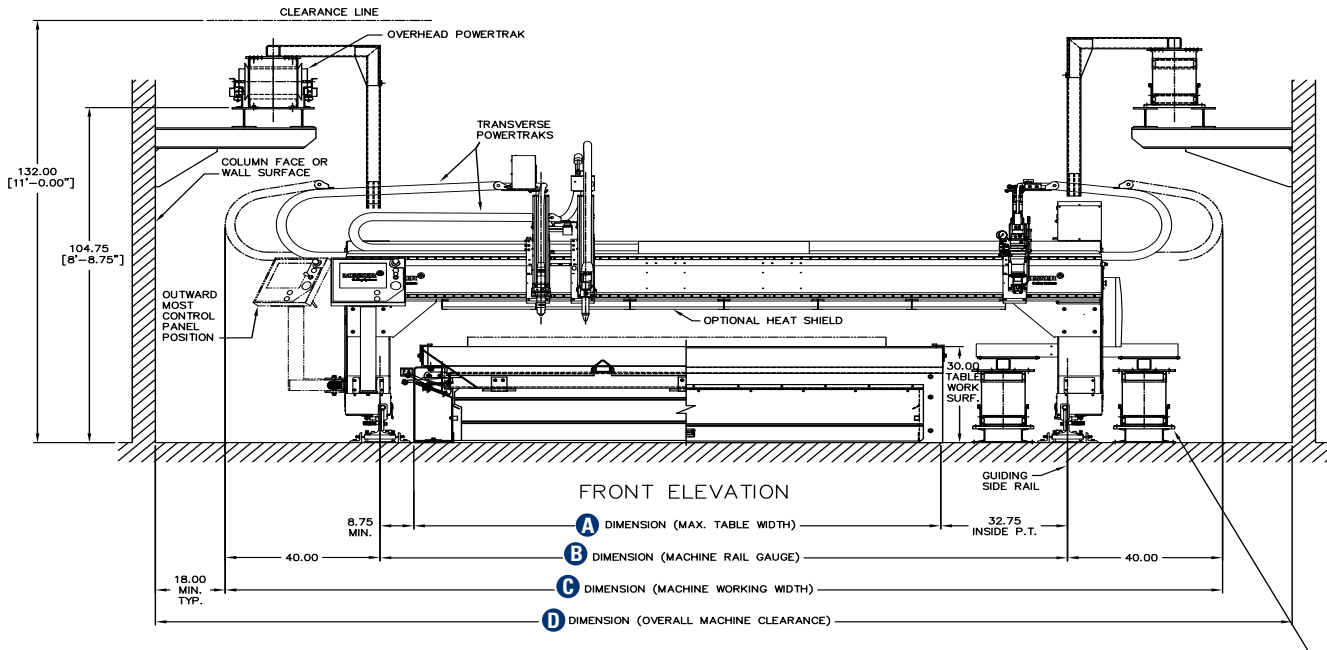
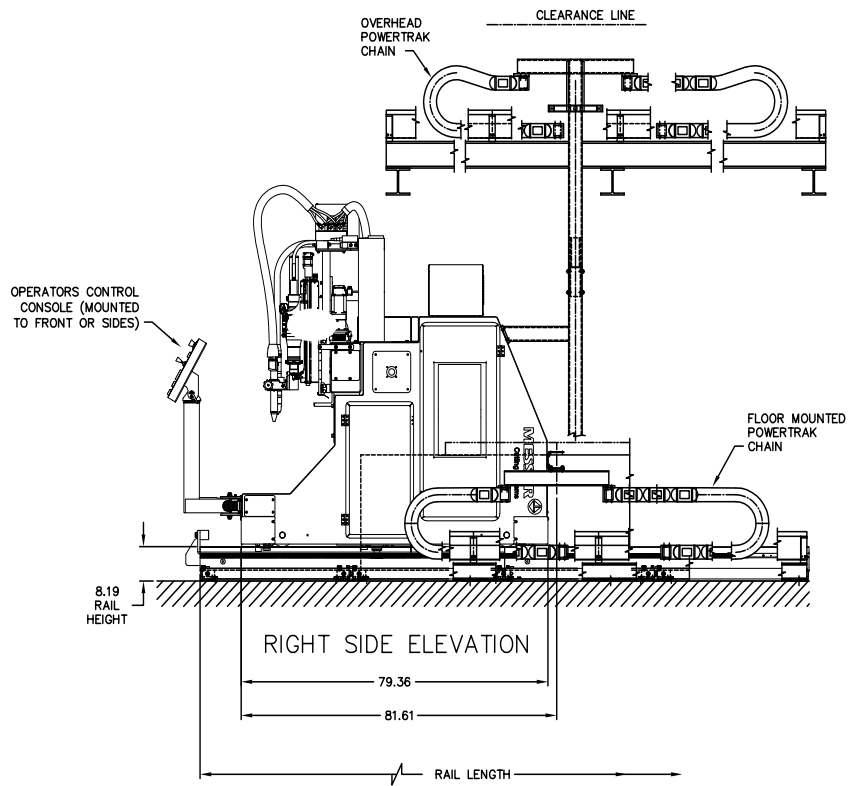
It automates slag removal, eliminating manual cleaning and significantly reducing downtime.

With a simple button push, the table self-cleans in minutes, making it a valuable asset for any cutting operation.

SLAGGER® BENEFITS

- + **Efficient Slag Removal:** Automated system for various cutting methods.
- + **Large Material Capacity:** Handles up to four-inch thick materials.
- + **Exclusive Design:** Patented and quality manufactured.
- + **Rapid Self-Cleaning:** Cleans in minutes with a button push.
- + **Adaptable Sizes:** Available in a wide range of widths and lengths.

TITAN III MACHINE MEASUREMENTS



Model Titan III	A Max. Table Width	B Machine Rail Gauge	C Machine Working Width	D Overall Machine Clearance
Titan 6'	88.00	105.50	185.50	221.50
Titan 8'	112.00	129.50	209.50	245.50
Titan 10'	136.00	153.50	233.50	269.50
Titan 12'	160.00	177.50	257.50	293.50
Titan 14'	184.00	201.50	281.50	317.50
Titan 16'	208.00	225.50	305.50	341.50

STANDARD FEATURES

- + Cutting widths: 6' to 16'.
- + Cutting lengths: up to 150'.
- + Machine motion accuracy; +/- .010" accuracy; .010" repeatability (compensated machine motion in 72") measured with a laser interferometer.
- + Cuts material from 26 ga. up to 12" thick plate.
- + Cuts mild steel, stainless steel, aluminum.
- + Contouring speeds up to 400 ipm.
- + Positioning speeds up to 1,700 ipm.
- + Reinforced steel weldment construction with high rigidity beam (less than 0.001" bend and 0.002 degrees of twist).
- + Machined mating surfaces and bores (critical tolerances of 0.002" maintained).
- + Power track in both axes is standard.
- + Up to eight torch stations (maximum two plasma stations).
- + Up to three torch stations will cover full rated cutting width.
- + Global Control^{IPlus}, Windows[®] based with easy to use operator interface.
- + Right or left hand mounted control console with tilt and swivel for operator comfort.
- + Virtual Service[™] remote consultation and diagnostics.
- + Advanced oxyfuel technology provides consistent piercing and faster cutting.
- + Designed and manufactured in the USA to machine tool and ISO 230-2 standards.
- + UL/CUL.

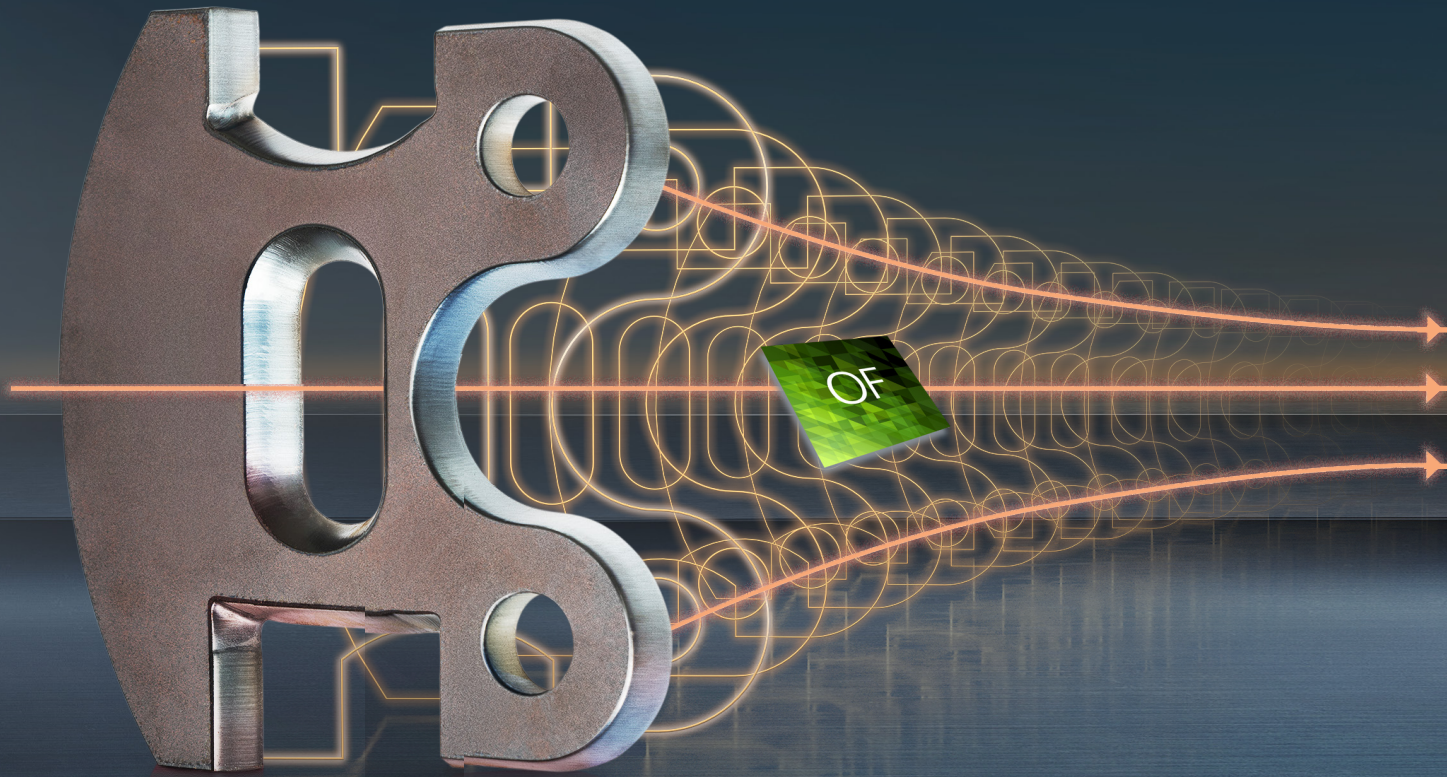
OPTIONAL FEATURES

- + Plasma bevel units: Delta[®], Manual Plasma Stripping Bevel Unit for the X-Axis.
- + Turbo Flame[™] or ALFA[™] oxy-fuel torches.
- + Oxy-fuel bevel units: Single Position and Three Position.
- + Lifters: SL- Lifters for straight plasma or oxyfuel cutting. PL-1 Plasma Lifter with SureStop Collision Sensor used with plasma beveling.
- + Advanced oxy-fuel technology with Omniflow automated gas control system.
- + Auto torch spacing with programmable torch selection.
- + FT100 Torch ignitor, and automatic height control for oxy-fuel systems, SensoMat[®]-PAN.
- + Dual Hi-Lo for oxyfuel.
- + Plate markers: Plasma, Air Scribe, Zinc Powder, Ink-Jet, and Telesis[®] PinStamp[®].
- + Digital Video Camera.
- + Laser Pointer.
- + Global Reporter.
- + Programming and nesting software.
- + Electric drilling up to 1/2".
- + Operator glare curtain.
- + Pull Cord and Photo Eye E-Stops.
- + Plasma Air Booster.
- + Rotary rail cleaners with gear rack air purge.
- + Zoned exhaust tables, including self-cleaning Slagger[®], and Water Table.
- + Messer dust collection system.
- + Exhaust ducting kits.
- + Flex Zone for processing material outside of the table.
- + Rotary Pipe and Tube cutting system.
- + Material handling systems.
- + Sentry Service Preventative Maintenance Program.
- + Visual Service adds the sense of sight to the troubleshooting process.

YOUR DIGITAL WORKFLOW

DIGITAL PRODUCTION

Our solutions ensure maximum transparency in operations management, production planning and control.



OMNIWIN

Ideal for Preparing Work

OmniWin is a powerful, easy to use designing and nesting software that saves time, material, and costs. It is the ideal tool for work preparation in oxyfuel, plasma, and laser cutting with CNC machines, taking over all cutting tasks for order-based production. The software is both effective and economical – for small productions as well as for just-in-time manufacturing with changing quantities in custom cutting operations.



OMNIFAB

Software Suite for Digital Transformation

OmniFab is the software suite that integrates Messer Cutting Systems' engineering technology into commercial processes in a holistic and process-oriented manner.

It provides relevant information for work preparation, production planning and plant management by connecting all systems. OmniFab also integrates material handling systems like loading/unloading stations, towers, material transportation devices and more – even on mobile devices.



OMNIBEVEL

The Tool for Bevel Cutting

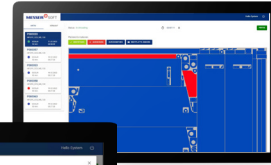
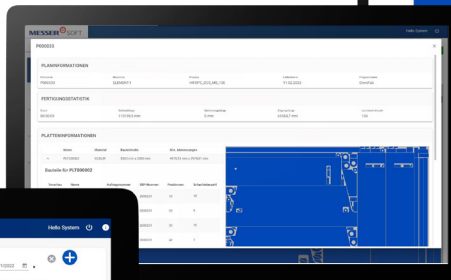
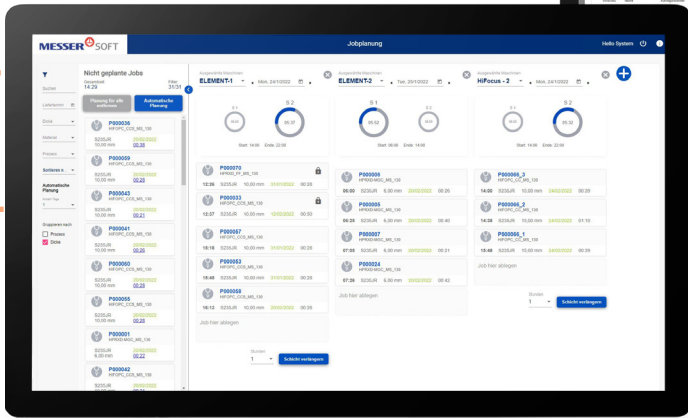
OmniBevel is the software for dimensionally accurate parts and the leading product for bevel cutting. The post-processor module with a graphical, easy to use interface delivers optimal cutting results.

It stands for straight cuts, cylindrical holes, exact bevel angles and enormous flexibility. Almost all possible technology parameters and operation details are adjustable.



Everything at a glance

With OmniFab Job Management, you always have an overview of all jobs. The software ensures the jobs are done on the right machines and with the best utilization, whether you are scheduling manually or automatically. Via OmniFab PDC, feedback from the running operation comes in real-time from the machine operators. You can use this information to react quickly to unforeseen events to make the right decisions.



OmniFab PDC Parts Status

OmniFab PDC Digital Work Sheets

OmniFab Job Management

**Novice operators become experts.
Programmers control the process remotely.
Maintenance employees prevent downtime.
Production managers know the job status
and reduce operating costs.**

All of this is possible if you see the CNC control as the connector between production plant, machine and its operator to allow local as well as remote production scheduling. Data transparency to others within the organization provides key information which is needed to make better business decisions.

- + Flexible job-centric environment for new operators to learn quickly and experienced operators to excel.
- + Job scheduling for improved production flow.
- + Quick processing of past or repetitive jobs.
- + Local nesting and standard shape library for just-in-time workflow.



SERVICES

SERVICE / AFTERSALES

A Commitment to Customer Satisfaction & Support



SERVICE

Sentry Service, Maintenance

Our Sentry Service personnel keep machines running like new, to ensure maximum uptime, greater efficiency and low operating costs.



SERVICE

Virtual & Visual Service™

Virtual Service is remote interactive support. With a push of a button, our team of experts are able to provide remote troubleshooting, software upgrades, and expert assistance. Visual Service adds the sense of sight to the troubleshooting process.



SERVICE

Field Service

After machine delivery, our field service technicians handle installation and ensure all installations are safe and up and running quickly. Technicians are available throughout the lifespan of your machine to keep it operating to its fullest potential.



AFTER SALES SUPPORT

Applications Department

Provides operator, programmer and process training for all aspects of cutting, drilling and marking; in-house and off-site training, including online remote live training and a software hot line.



AFTER SALES SUPPORT

Parts Department

Our well-trained staff ensure that you get the right spare parts and consumables to maintain your Messer machine. Most items are in stock at all times; we can guarantee you'll receive the best prices with the fastest delivery.



AFTER SALES SUPPORT

Retofit Department

Upgrade existing cutting machines with the latest technology and processes to extend the machine's life. It can be more cost effective than replacing the entire system.

COMMITTED TO OUR CUSTOMERS SUCCESS, EVERY STEP OF THE WAY

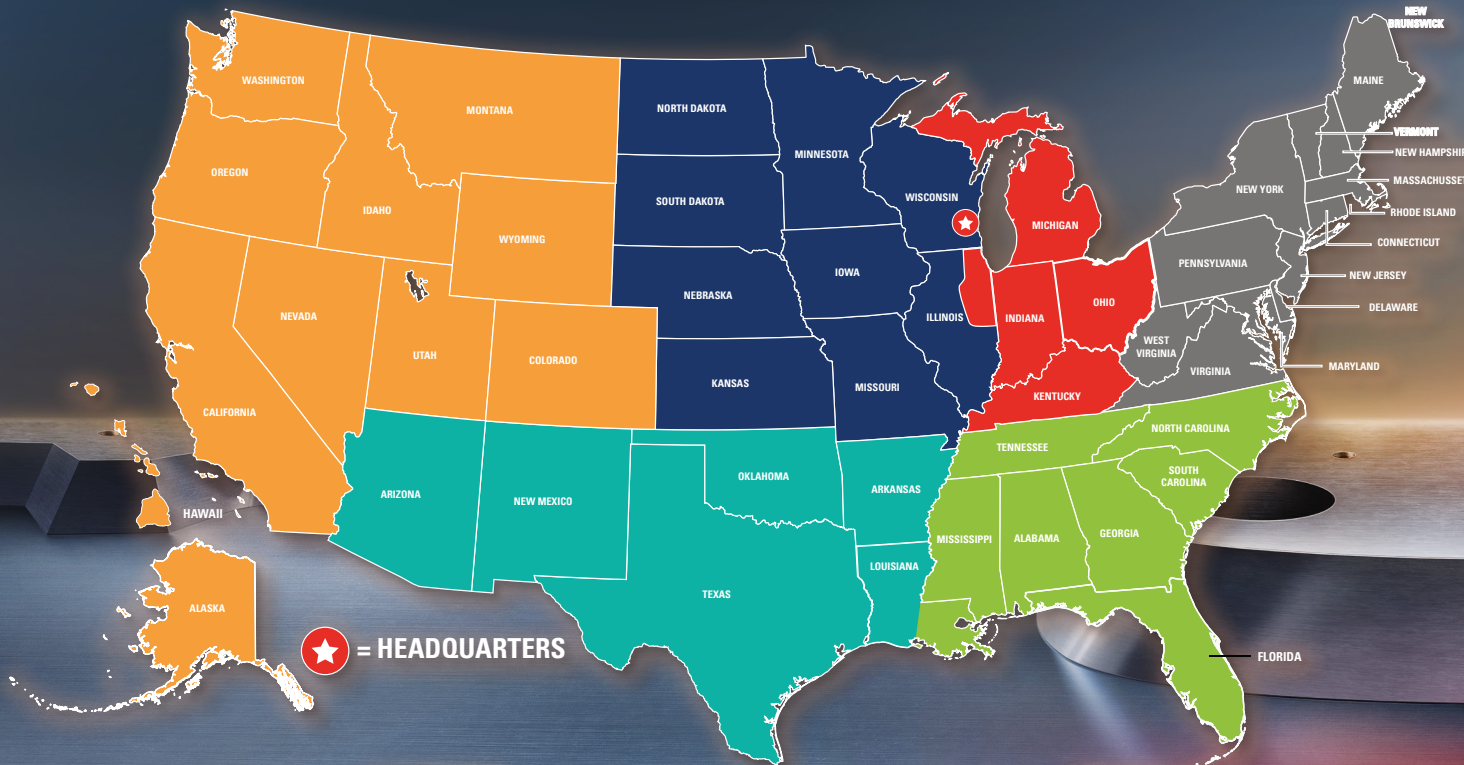
SERVICES

REGIONAL MAP

National Reach, Local Expertise

UNITED STATES

WESTERN REGIONAL MANAGER: western@messer-cutting.com	CENTRAL REGIONAL MANAGER: central@messer-cutting.com	GREAT LAKES REGIONAL MANAGER: greatlakes@messer-cutting.com	SOUTH CENTRAL REGIONAL MANAGER: southcentral@messer-cutting.com	NORTHEAST REGIONAL MANAGER: northeast@messer-cutting.com	SOUTHEAST REGIONAL MANAGER: southeast@messer-cutting.com
-------------------------------------------------------------------	-------------------------------------------------------------------	--------------------------------------------------------------------------	------------------------------------------------------------------------------	-----------------------------------------------------------------------	-----------------------------------------------------------------------



CANADA

MEXICO

EAST / WEST CANADA REGIONAL MANAGER: ewca@messer-cutting.com	CENTRAL CANADA REGIONAL MANAGER: centralca@messer-cutting.com	MEXICO REGIONAL MANAGER: mexico@messer-cutting.com
---------------------------------------------------------------------------	----------------------------------------------------------------------------	-----------------------------------------------------------------





CREATING SOLUTIONS BEYOND MACHINES

What we stand for

Messer Cutting Systems is a global supplier of cutting-edge technology for the metalworking industry.

Our portfolio is built on the pillars of PRODUCT, DIGITAL, SERVICES, AUTOMATION and KNOW-HOW. With over 900 employees worldwide in over 50 countries, we maintain a constant dialogue with our customers. Through these partnerships, we achieve customer-oriented innovation and focus on “creating solutions beyond machines”.

We deliver not just modern cutting systems and solutions for plasma, laser, and oxyfuel technology, but appropriate services, training, our own software applications, and the integration of solutions from our technology partners in the field of automation. A network encompassing the machine, providing total solutions.

Our know-how combined with our customer-oriented attitude and actions have made us the worldwide partner of choice, delivering innovative solutions to the plate processing industry for over 120 years.

PRODUCT

AUTOMATION

DIGITAL

SERVICES

KNOW-HOW

Messer Cutting Systems, Inc.

W141 N9427 Fountain Boulevard
Menomonee Falls, WI 53051

Tel. +1 262-255-5520

Fax +1 262-255-5170

Email sales.us@messer-cutting.com

messer-cutting.com

Messer Cutting Systems reserves the right to make changes in equipment or specifications at any time without notice. Windows is a registered trademark of Microsoft Corporation. Slagger is a registered trademark of Missouri Valley Steel, a division of Owen Industries.
© 2024 Messer Cutting Systems.