

SBG



***The total solution for
Stick Blade Grinding***

ANCA[®]

SBG *The ANCA solution for stick blade grinding*

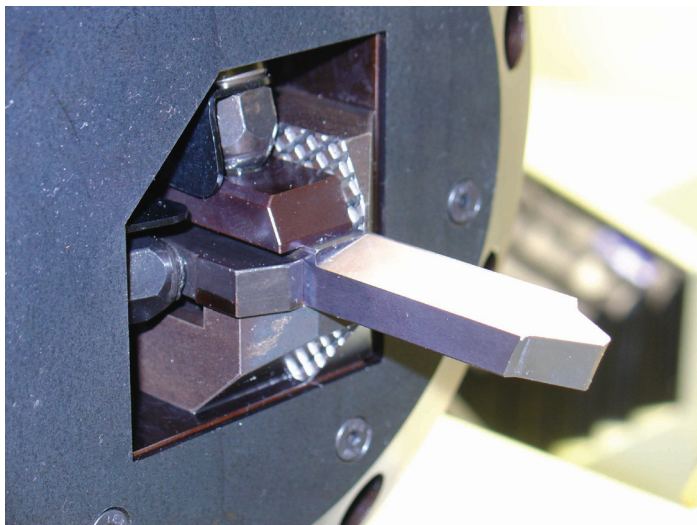
The ANCA Stick Blade Grinder (SBG) is your total solution for the manufacture and reconditioning of stick blades used in the production of hypoid bevel gears.

Used in automotive differentials, hypoid bevel gears are a fundamental component in automotive drive train technology.

Therefore, automotive manufacturers seek to manufacture these components to the highest consistency and quality, while also looking for ways to operate more efficiently.

ANCA SBG is a precision CNC grinding machine, designed as a total solution for the automated manufacture and reconditioning of stick blades that are used in production milling, or hobbing, of hypoid bevel gears.

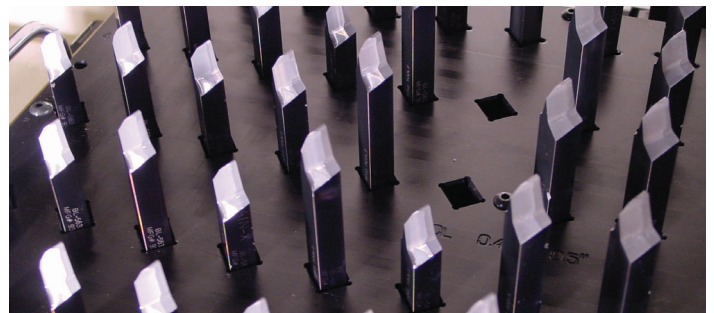
The SBG's rigid machine construction, intuitive software and complete automation sets you up for unmanned production of the highest quality stick blades for the automotive industry.



Features to meet the needs of stick blade regrinders

ANCA's SBG has been developed to suit the requirements of stick blade grinding. Features include:

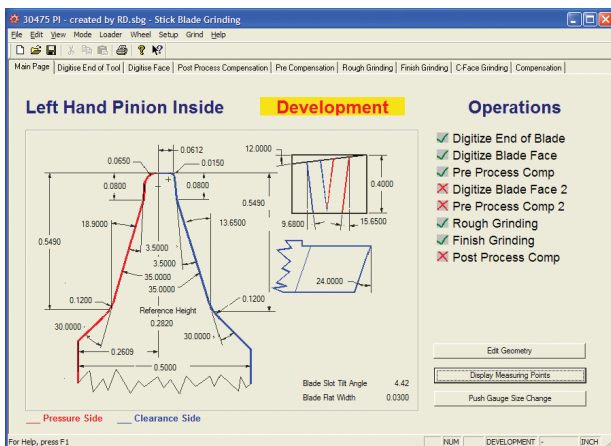
- A dedicated blade holding chuck able to accommodate a range of square blades up to 15.5 x 23.5 mm (0.61" x 0.93") and pentac blades up to 19 x 35.5 mm (0.75" x 1.4")
- Being equally capable of manufacturing new, or resharpening used stick blades
- The ability to grind HSS and carbide stick blades
- Unmanned continuous grinding with ANCA tool loading systems
- On-machine wheel dressing



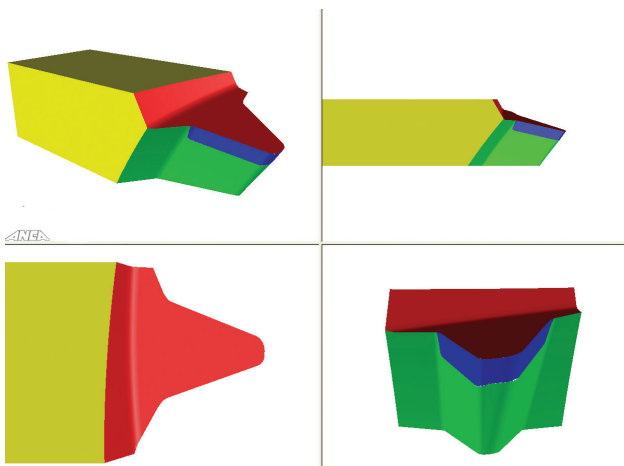
ANCA's SBG Dedicated Software

As with all ANCA grinding machines, ANCA's software enhances SBG's flexibility and ease of use with:

- A Windows based user interface
- Customised reading of industry standard Gleason 300CG, or Klingelnberg KiMOS stick blade summary files including RSR, TRI-AC®, ARCON®, SPIRON® and Pentac®
- The ability to adjust blade profile to improve cutting performance or gear geometry
- Development and production mode controls and user access levels for parameter adjustment



- Administrator software that allows the connection of multiple SBG machines to a single network point allowing the monitoring of production status and compensation of machines
- Compensation of blade from either Gleason 562 measurement results, Klingelnberg P40 measurement results, or from a bench-top push gauge
- ANCA CIMulator3D software for complete offline simulation of the grinding process virtually eliminating on machine set-up grinding



SBG's specialist stick blade processes ensure quality

The SBG has specific stick blade grinding and measurement cycles that ensure the precision and quality of the final product. These include:

- Automatically digitising the stick blade to accurately locate its position and compensate for any tool misalignment
- Manufacturing and regrinding cycles that include rough and finish grinding of profile with primary and secondary relief and C-face
- Post grinding process blade digitising to automatically compensate for wheel wear and process thermal drift relative to a master blade



ANCA global support is part of your investment

ANCA SBG is the choice of industry which is looking for the ultimate in high precision, reliability and flexibility.

It is designed to meet the demands of a competitive industry, and is supported by ANCA's worldwide team of technical specialists. Confidence that ANCA is the right choice goes beyond the machine. The ANCA team will be your partner with application and machine support from initial training, to ongoing maintenance.

CNC Data

ANCA 5DX, Pentium 4, min. 512 Mb, 15" Touch Screen, Ethernet, CD Read and Write/DVD Read Only

Software axes (patented)

B, V, U, W, A

Work piece

Square blade	Min 10.2mm x 12.7mm (0.4" x 0.5") Max 15.5mm x 23.5mm (0.61" x 0.93")
Pentac blade	Min 6.3mm x 7.6mm (0.25" x 0.3") Max 19mm x 35.5mm (0.75" x 1.4")

Drive system

ANCA Digital (SERCOS standard) / Linear axes direct-drive ballscrew / Rotary axes direct drive

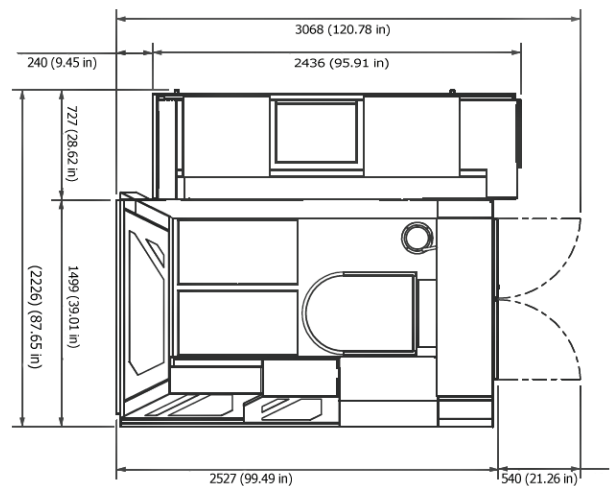
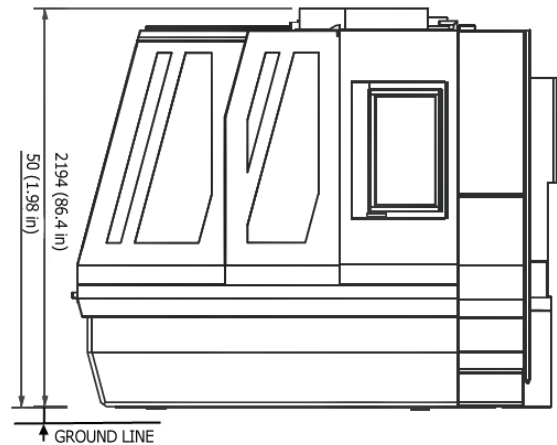
Machine data

Grinding spindle	Bi-directional direct drive 37 kW/49 HP (peak) 10,000 RPM (15,000 RPM option) Integral direct drive BIG Plus BT 40
Grinding wheel	Max Ø203 mm (8")
Wheel bore	Ø50.8 mm (2")
Two wheel packs	Max 4 wheels each

Other data

Electrical power	25KVA
Probe system	Renishaw
Coolant system	External
Machine base	ANCAcrete (Polymer concrete)
Colour	RAL 7035 / RAL 5014
Weight	Approximately 8200 kg (18,040 lbs)
Floor plan	Width: 2527 mm (100") Depth: 1499 mm (59") Height: 2244 mm (88")

ANCA reserves the right to alter or amend specifications without prior notice



Shown with RoboMate loader

AUSTRALIA

ANCA Pty. Ltd.
25 Gatwick Road
Bayswater North
Victoria 3153
AUSTRALIA
Tel +61 3 9751 8200
ozinfo@anca.com

USA

ANCA Inc.
31129 Century Drive
Wixom
Michigan 48393
USA
Tel +1 248 926 4466
usainfo@anca.com

UNITED KINGDOM

ANCA Ltd.
2 Eastwood Business Village
Harry Weston Road
Coventry CV3 2UB
UNITED KINGDOM
Tel +44 2476 44 7000
ukinfo@anca.com

JAPAN

ANCA Japan
3-60-1 Sakuragaoka-cho
Owariasahi-shi
Aichi-Ken 488-0859
JAPAN
Tel +81 561 53 8543
japinfo@anca.com

CHINA

ANCA Machine Tool (Shanghai) Co. Ltd
West Wing, 1/F., Building 4,
475 Fu Te No.1 Road(W)
Waigaoqiao FTZ, Shanghai, 200131
CHINA
Tel +86 21 5868 2940
chinfo@anca.com

BRAZIL

ANCA do Brasil
Rua Francisco Ferreira Leão 377
Sorocaba 18040 330
São Paulo
BRAZIL
Tel +55 15 3221 5512
brinfo@anca.com

ITALY

ANCA Italia
Via Retrone, 39
36077 Altavilla Vicentina (VI)
ITALY
Tel +39 0444 341 642
itinfo@anca.com

GERMANY

ANCA GmbH
Alois-Senefelder-Str. 4
68167 Mannheim
GERMANY
Tel +49 621 338100
gerinfo@anca.com

INDIA

ANCA India
ANCA Machine Tools Private Ltd
No. #64, Parimala Towers
MES Rd
Yeshwantpur
Bangalore 560 022
INDIA
Tel +91 80 4219 8107/108
indiainfo@anca.com

THAILAND

ANCA (Thailand) Ltd
Eastern Seaboard Industrial Estate
No. 109/14 Moo 4
Tambon Pluakdaeng
Amphur Pluakdaeng
Rayong 21140
THAILAND
Tel +66 3895 9252
thainfo@anca.com