

PLATEMASTER II

YOUR PATH TO PROFIT

MESSER 
Cutting Systems

THE PLATEMASTER II

YOUR PATH TO PROFIT





GLOBAL CONTROL^S

Easy-to-use, feature rich, Windows® interface. The Global Control^S is compact and touch screen. Featuring custom shape library, CAD import, and true-shape nesting. Virtual Service puts Service experts one push button away. Easy to learn functions allow employees to become expert operators in minutes.



BRUSHLESS DIGITAL DRIVES

Zero maintenance, high compliance digital drives provide a smooth cut edge. No brushes to change and no required tune-ups allows for maximized productivity.



X-AXIS WHEEL AND GUIDES

Large diameter drive wheels combined with a loaded compliant guide system delivers superior drive motion.



RUGGED BOX BEAM

Dual steel box beam, precisely machined way and gear rack surfaces provide lasting strength, durability, and precision.



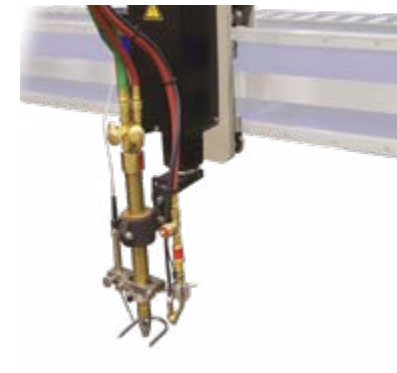
ALFA OXY-FUEL TORCH WITH SL LIFTERS

Fast oxy-fuel cutting with integrated height sensing and ignition. No probes to burn or external ignitors to foul. Coupled with our SL Series Lifters designed for harsh environments let you spend more time cutting and less time in setup. (Optional)



OMNIFLOW

Operators concentrate on cutting and not on costly torch setup and adjustments using this automated gas control system. Internal database makes novice operators an expert in minutes. Less scrap and set-up time means more profit.



TURBOFLAME™ TORCH WITH THE EL-170 TORCH LIFTER

Cut up to 20% faster with many fuel gases. Combined with the EL-170 Torch lifter for an accurate, smooth vertical torch positioning 118 IPM and 6.7" of stroke. (Optional)



VIDEO CAMERA

The on-board video camera can be used as an alignment tool and to monitor the cutting process. The image is conveniently displayed on the 15" TFT color screen of the Global Control^S. (Optional)



MULTI STATION DRIVE BAND

High strength stainless steel band provides easy, cost saving, multi-torch cutting and fast torch spacing setup.



THE SLAGGER® TABLE AND BLADE

Heavy-duty zone and ducted table with push-button automatic cleaning. Spend more time cutting and less time cleaning. The Slagger® blade shown pushing slag in the slag bucket. (Optional)



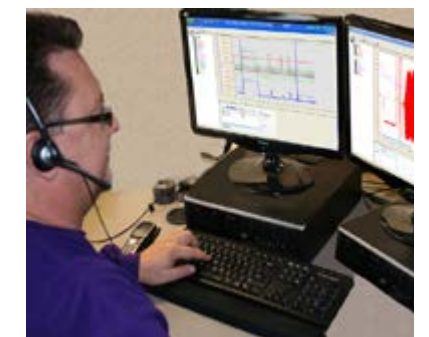
X-AXIS RAIL SYSTEM

Oversized floor mounted rail provides a rigid foundation for smooth stable machine motion. Fast, accurate installation is assured with precision leveling and alignment pads.



SURESTOP COLLISION SENSOR

Eliminate expensive torch repairs after a collision. Drop torch back in holder for quick and simple realignment to help save downtime and money. (Optional)



VIRTUAL SERVICE™

With a push of a button on the Global Control, Messer's team of experts provide remote trouble-shooting, software upgrades and expert assistance when needed.

THE PLATEMASTER II

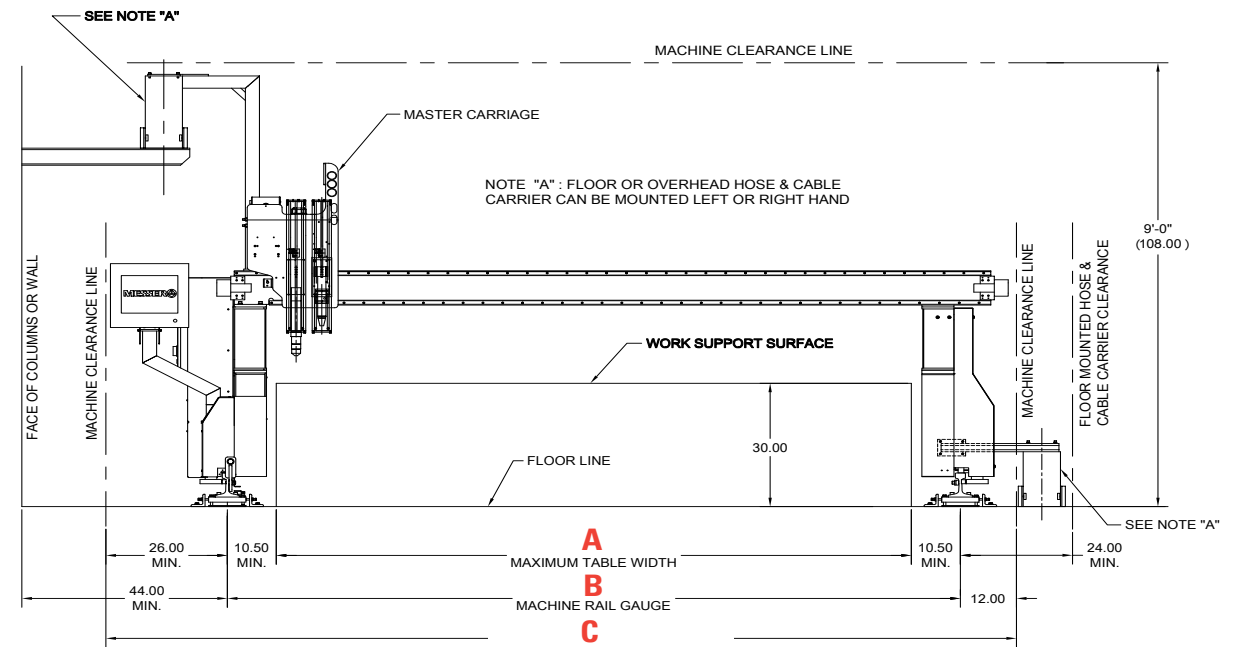
Messer Cutting Systems PlateMaster II is an economical solution for plate cutting needs. Rugged floor mounted rails are machined from 90 lb/yd crane rail stock. Heavy, internally gusseted end truck support the dual box beam for smooth motion.

The PlateMaster II can support two high performance plasma systems and up to six oxyfuel torches including the ALFA Oxyfuel Torch which features integrated ignition and probe-less height control. All torch systems are suspended by a rugged, high speed, low maintenance lifters which provide a rigid torch support for the smoothest cut finish.

Equipped with the easy-to use, feature rich, Global Control^S operator interface, allows employees to become expert operators.

PLATEMASTER II MODEL MEASUREMENTS

Model	A Maximum Table Width	B Machine Rail Gauge	C Minimum Machine Clearance
PlateMaster II 6'	88.00"	109.00"	147.00"
PlateMaster II 8'	112.00"	133.00"	171.00"
PlateMaster II 10'	136.00"	157.00"	195.00"
PlateMaster II 12'	160.00"	181.00"	219.00"



Operator Convenience

- Plasma and oxyfuel gas controls are located in the Global Control^S.
- Global Control^S provides touch screen interface with Windows[®] to help operators quickly master the machine.
- As a standard feature the operator station is positioned on the left side. The right side is optional.
- The Global Control^S swivels and tilts.
- Oxyfuel auto pierce control.
- Twenty home positions for multiple start points.
- Lost cut recovery - reposition to any pierce point.
- All auxiliary functions are easily accessible at the operator's station.

Powerful drives and smooth motion yield accurate and high quality parts.

2.3 hp Digital Brushless AC drives coupled to Alpha brand low-backlash gearboxes, efficiently and accurately drive the machine to speeds up to 1400 IPM. Large, 4.7 inch diameter hardened pinions transmit power thru the one inch wide gear rack. Both X and Y gear rack systems are mounted in machined steps to insure precise alignment and maximum accuracy.

STANDARD FEATURES

- Cutting widths 6', 8', 10', 12'.
- Standard cutting lengths up to 72 ft.
- Cut 26 ga. to 6" thick plate.
- Cuts mild steel, stainless steel, and aluminum.
- Contouring speeds up to 400 IPM.
- Positioning speeds up to 1,400 IPM.
- Reinforced steel weldment construction with a rigid beam.
- Machined mating surfaces and bores (critical tolerances of 0.002" maintained).
- Standard powertrack in both axes.
- Up to six oxyfuel torch stations (maximum two plasma stations).
- Up to two stations will cover full rated cutting width.
- Maintenance free digital brushless AC drives.
- Global Control^S is Windows[®] based for easy-to-use operator interface with a compact touch screen.
- Left hand mounted control console tilts and swivels for operator comfort.
- SureStop Collision Sensor allows easy and accurate reset.
- Virtual Service[™] remote consultation and diagnostics.
- Designed and manufactured in the USA. to machine tool and ISO 230-2 standards
- UL/CUL.

OPTIONAL FEATURES

- Precision plasma up to 800 amps.
- Plasma lifters: PL-1, CSL-200 Series.
- Manual Plasma Stripping Bevel Unit for X-Axis .
- Turbo Flame[™] or ALFA oxyfuel torches.
- Advanced oxyfuel technology with Omniflow automated gas regulation system.
- FT-100 Torch ignitor, and automatic height control for oxyfuel systems.
- Oxy-fuel lifters: EL-170, SL-200.
- Plasma lifters: PL-1, CSL-200 and SensoMat[®]-PAN.
- Plate markers: Plasma, Air Scribe, Zinc Powder, and Ink Jet.
- Digital Video Camera.
- Laser Pointer.
- Global Reporter.
- Programming and nesting software.
- Glare Shield.
- Plasma Air Booster.
- Right hand mounted control console tilts and swivels for operator comfort .
- Zoned exhaust tables, including self-cleaning Slagger[®].
- Vertical Pipe and Tube Cutting system.
- Messer dust collection system.
- Exhaust ducting kits.
- Sentry Service Preventative Maintenance Program.

Keep up with the latest news
and "Like Us" on Facebook.

Messer Cutting Systems reserves the right to make changes in equipment or specifications at any time without notice. Windows is a registered trademark of Microsoft Corporation. Slagger is a registered trademark of Missouri Valley Steel, a division of Owen Industries. © 2019 Messer Cutting Systems

Messer Cutting Systems, Inc.
W141 N9427 Fountain Boulevard
Menomonee Falls, WI 53051
Tel. +1 262-255-5520
Fax +1 262-255-5170
sales.us@messer-cutting.com
www.us.messer-cutting.com
Español www.mx.messer-cutting.com